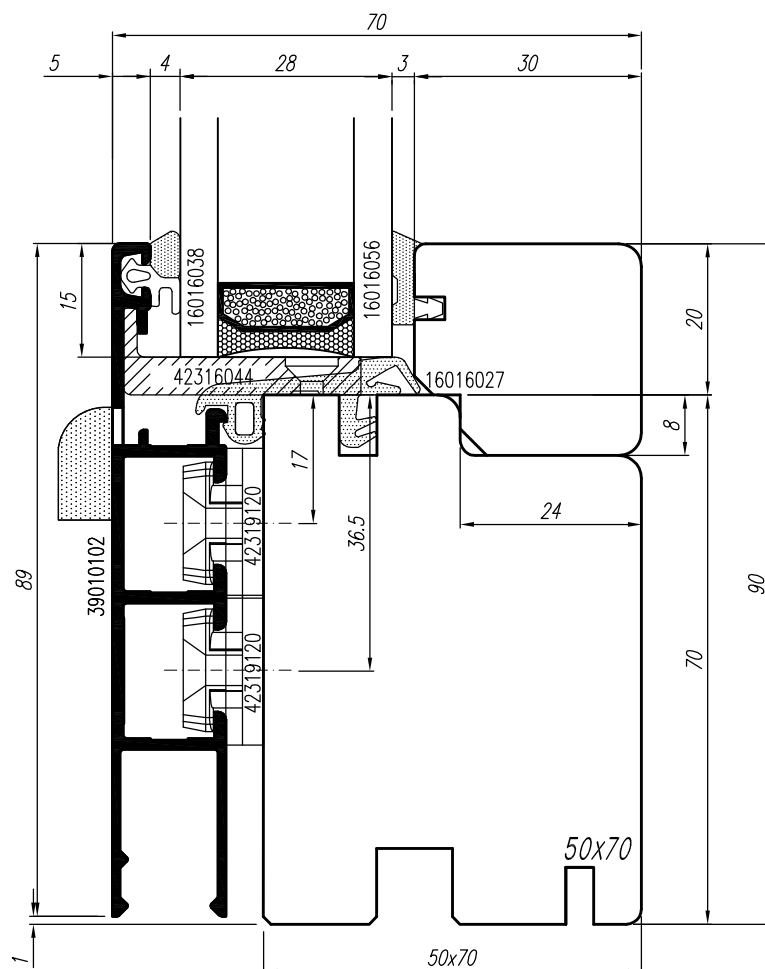
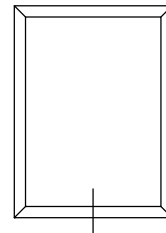


astro 11

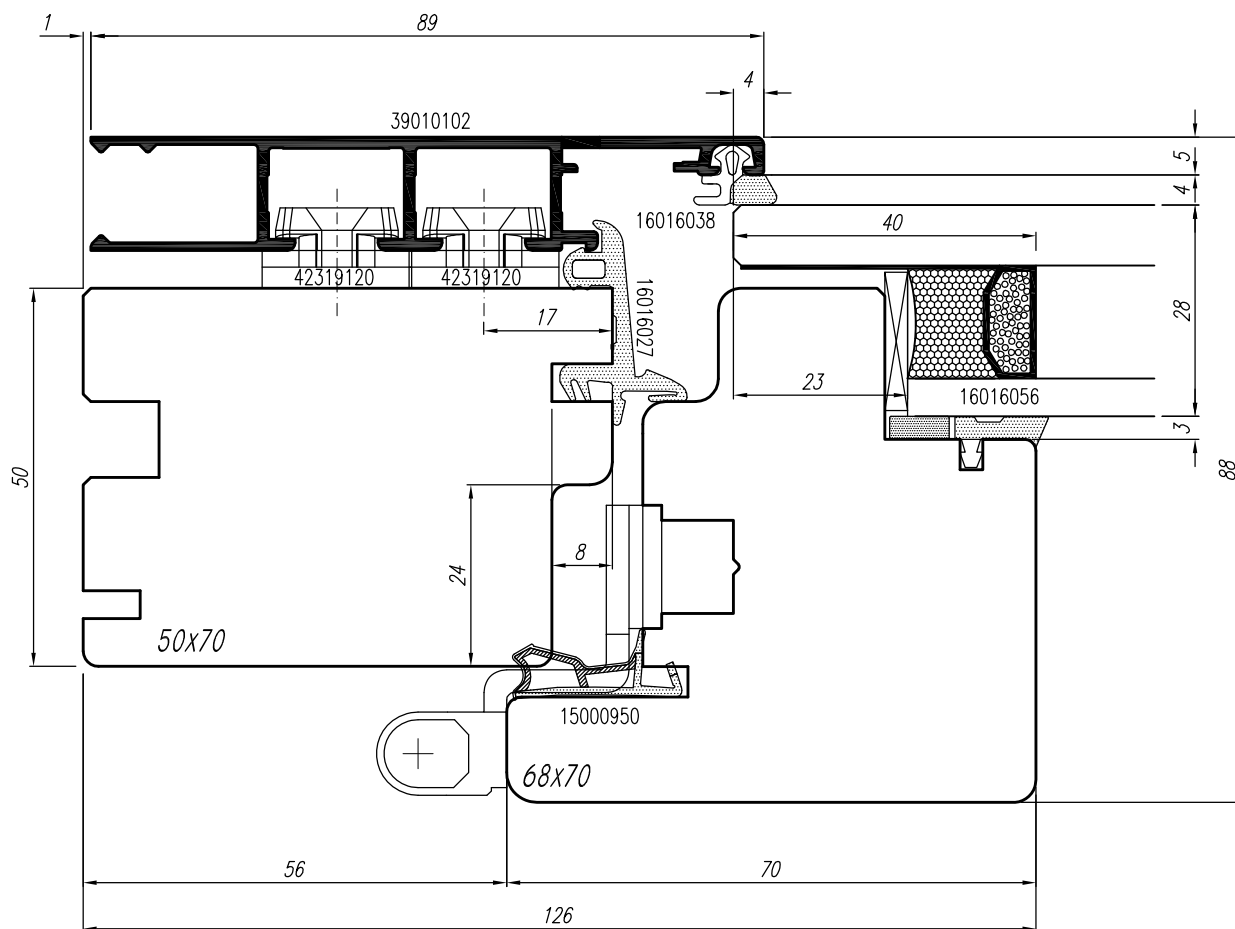
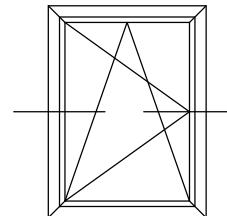


astro 11



ESCALA 1:1

- (E) *Seccion vertical inferior vidrio fijo*
- (F) *Section verticale inferieure vitrage fixe*
- (I) *Sezione verticale inferiore vetro fisso*

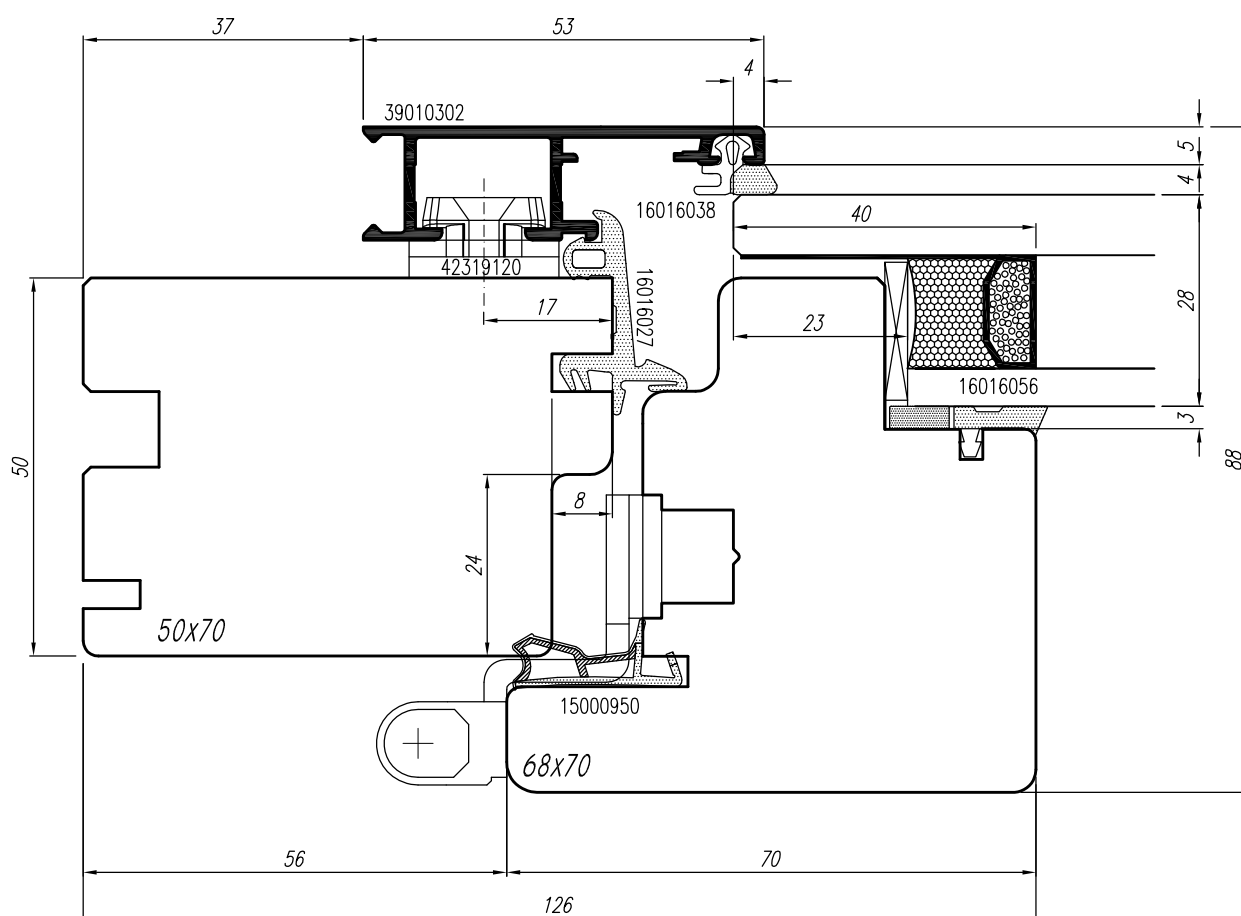
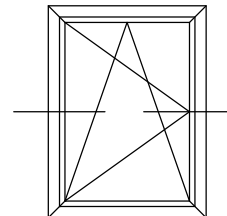


astro 11



ESCALA 1:1

- (E) *Seccion vertical y horizontal*
- (F) *Section verticale et horizontale*
- (I) *Sezione verticale e orizzontale*

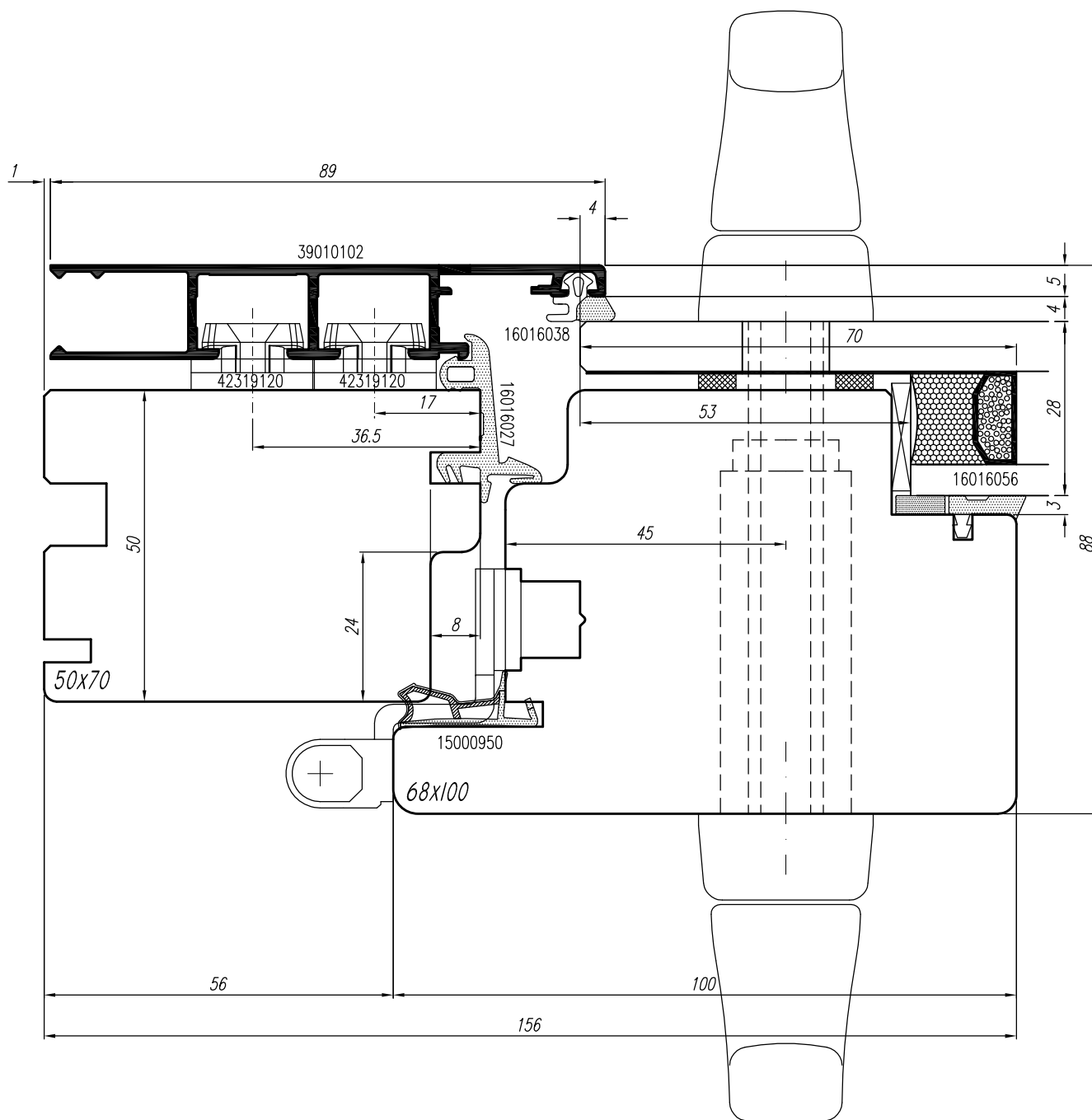
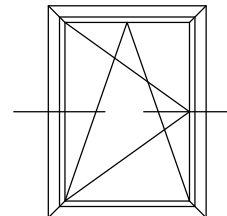


astro 11



ESCALA 1:1

- (E) Seccion vertical y horizontal
- (F) Section verticale et horizontale
- (I) Sezione verticale e orizzontale

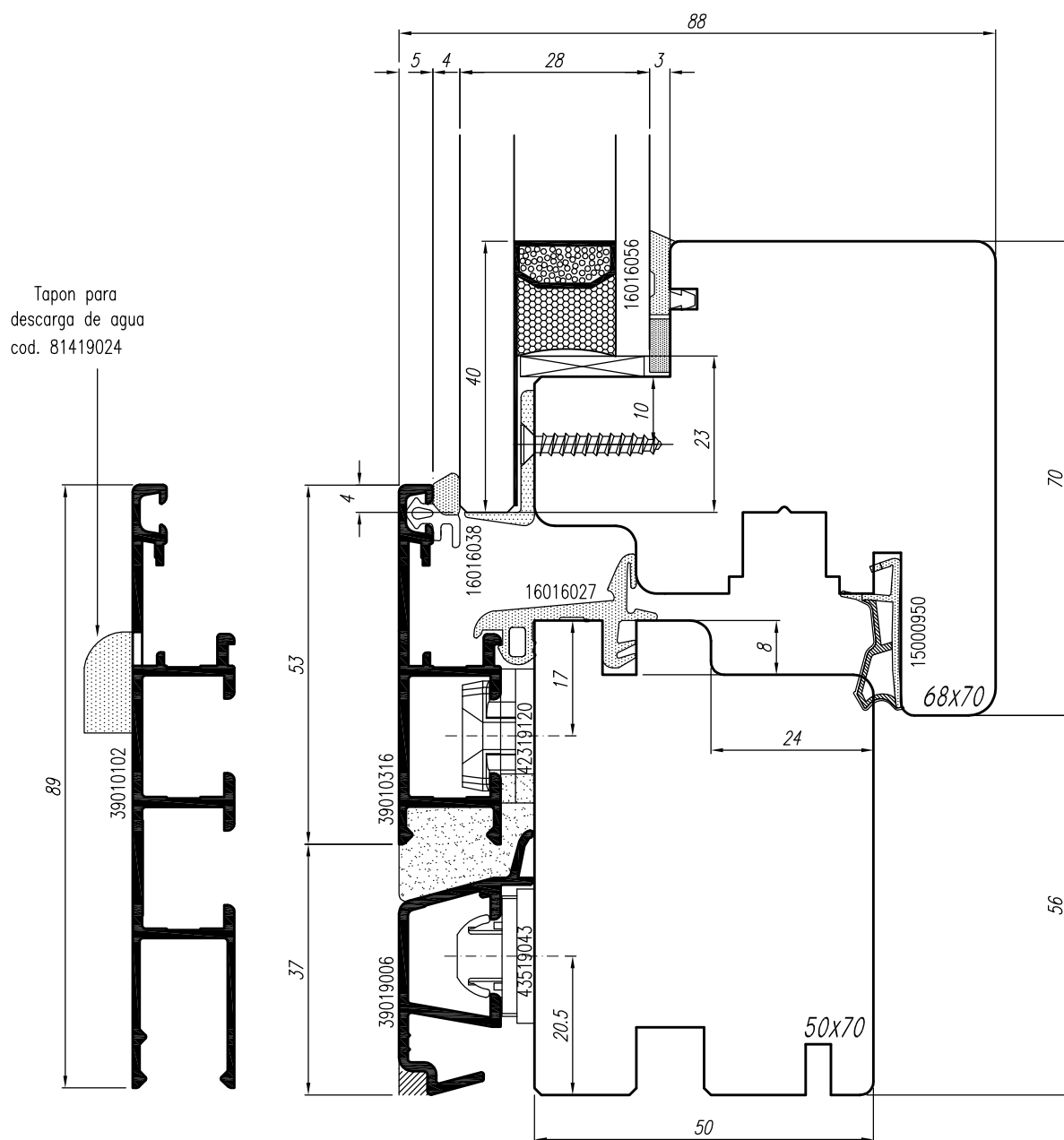
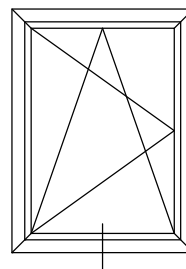


astro 11



ESCALA 1:1

- (E) Seccion horizontal hoja 100 mm
- (F) Section horizontale ouvrant 100 mm
- (I) Sezione orizzontale anta 100 mm

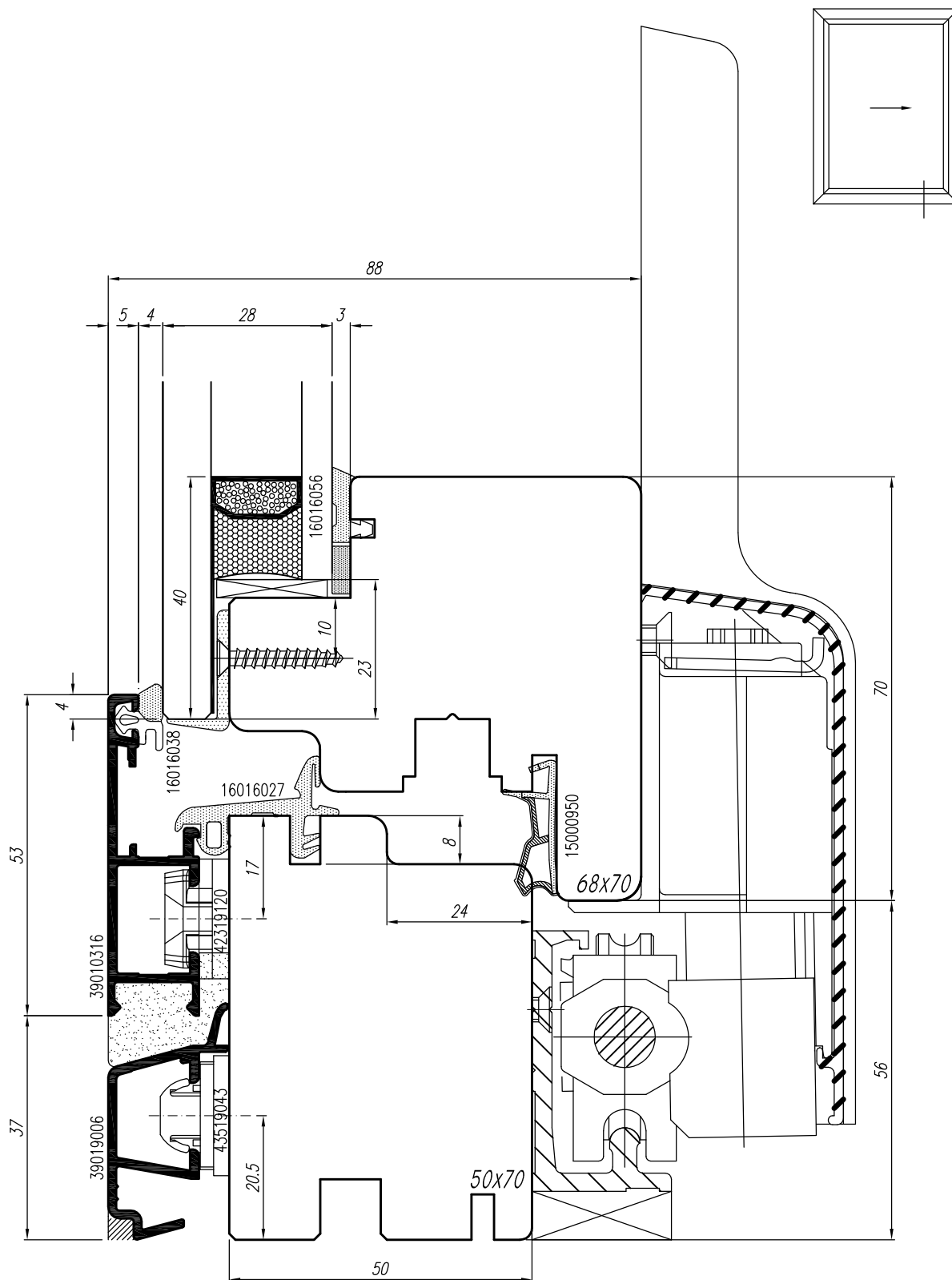


astro 11



ESCALA 1:1

- (E) *Seccion vertical travesaño inferior*
- (F) *Section verticale traverse inferieure*
- (I) *Sezione verticale traverso inferiore*



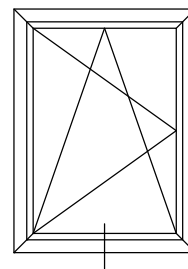
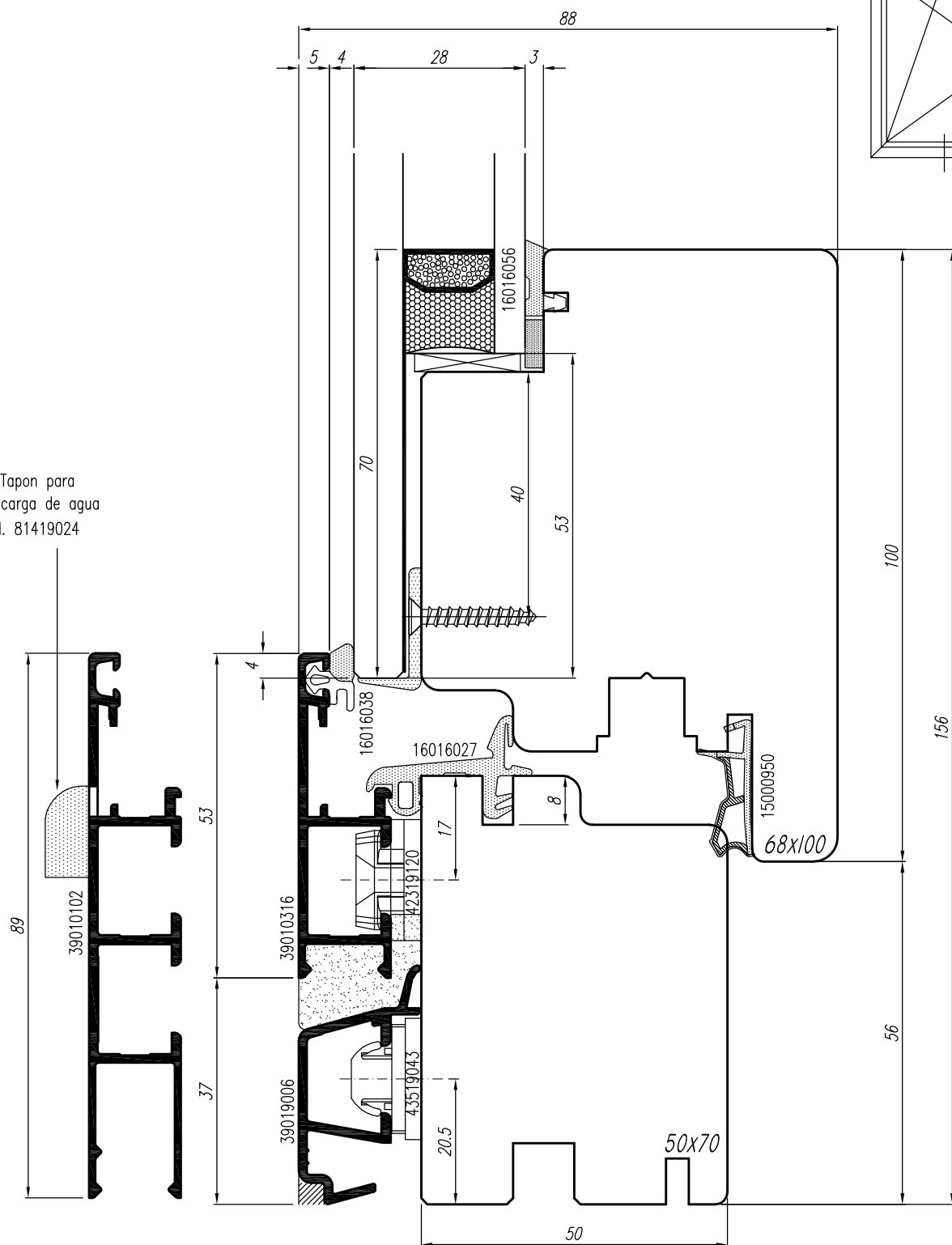
astro 11

SINATEC

ESCALA 1:1

- (E) Sección vertical travesaño inferior de corredera paralela
- (F) Sec. vert. trav. inf. avec guide inferieure pour une coulisse paralliele
- (I) Sezione verticale traverso inferiore per scorrevole parallelo

Tapon para
descarga de agua
cod. 81419024

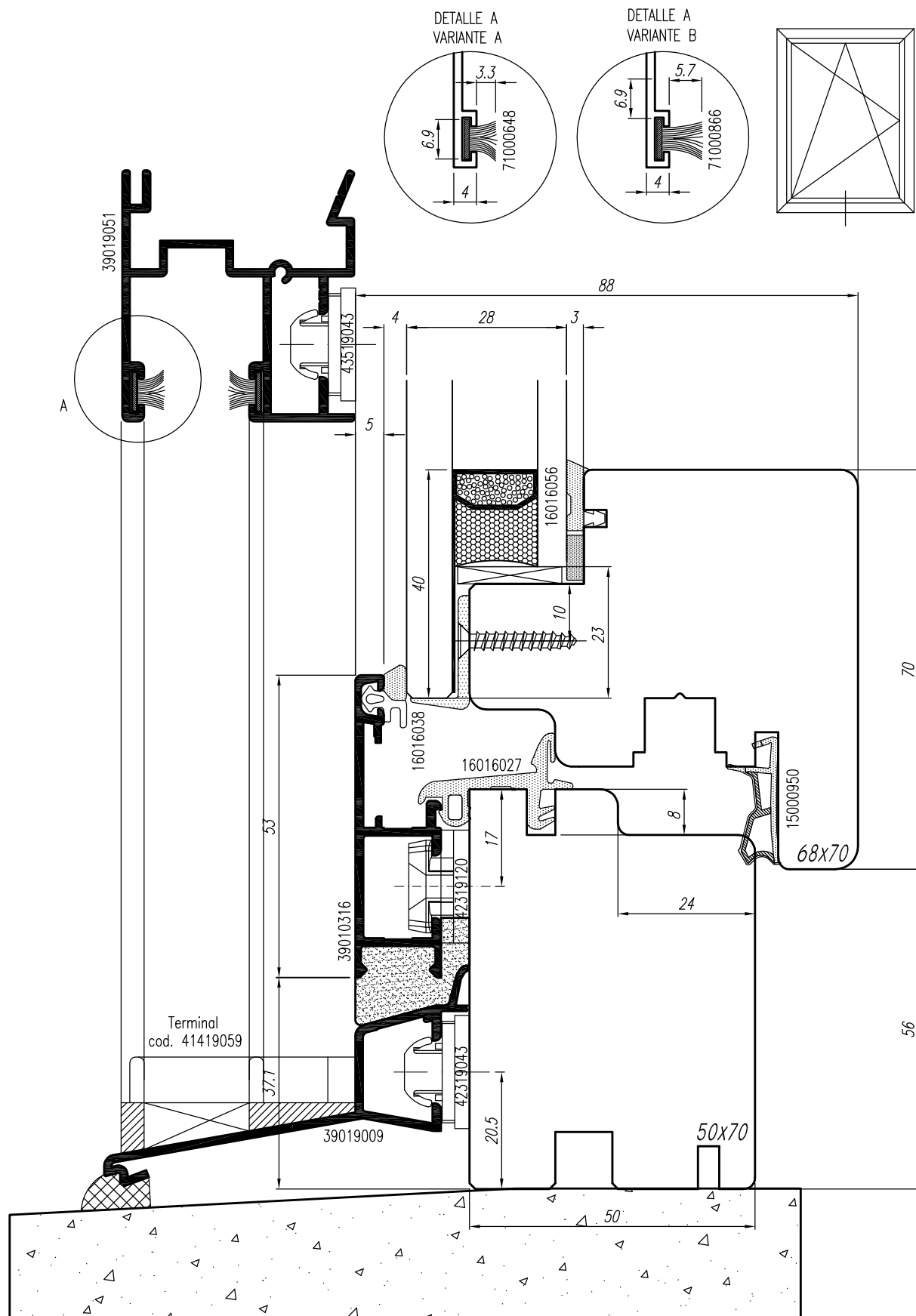


astro 11

SINATEC

ESCALA 1:1

- (E) Seccion vertical travesaño inferior, hoja 100 mm
- (F) Section verticale traverse inferieure, ouvrant 100 mm
- (I) Sezione verticale traverso inferiore, anta 100 mm

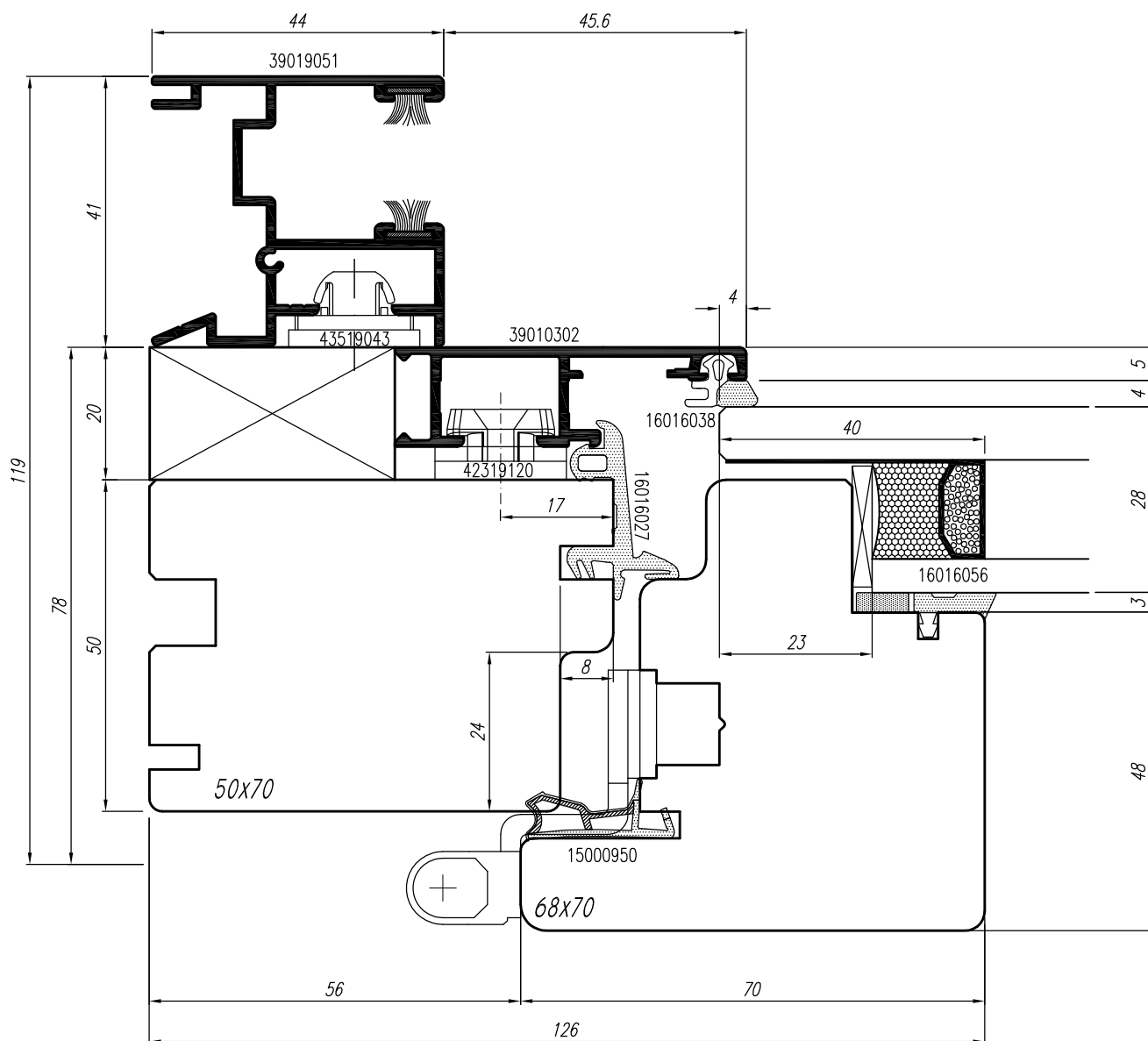
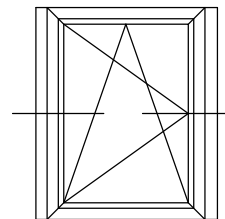


astro 11

SINATEC

ESCALA 1:1

- (E) Sección vertical travesaño inferior con bancada
- (F) Section verticale inferieure pour fenêtre
- (I) Sezione verticale traverso inferiore con bancalino

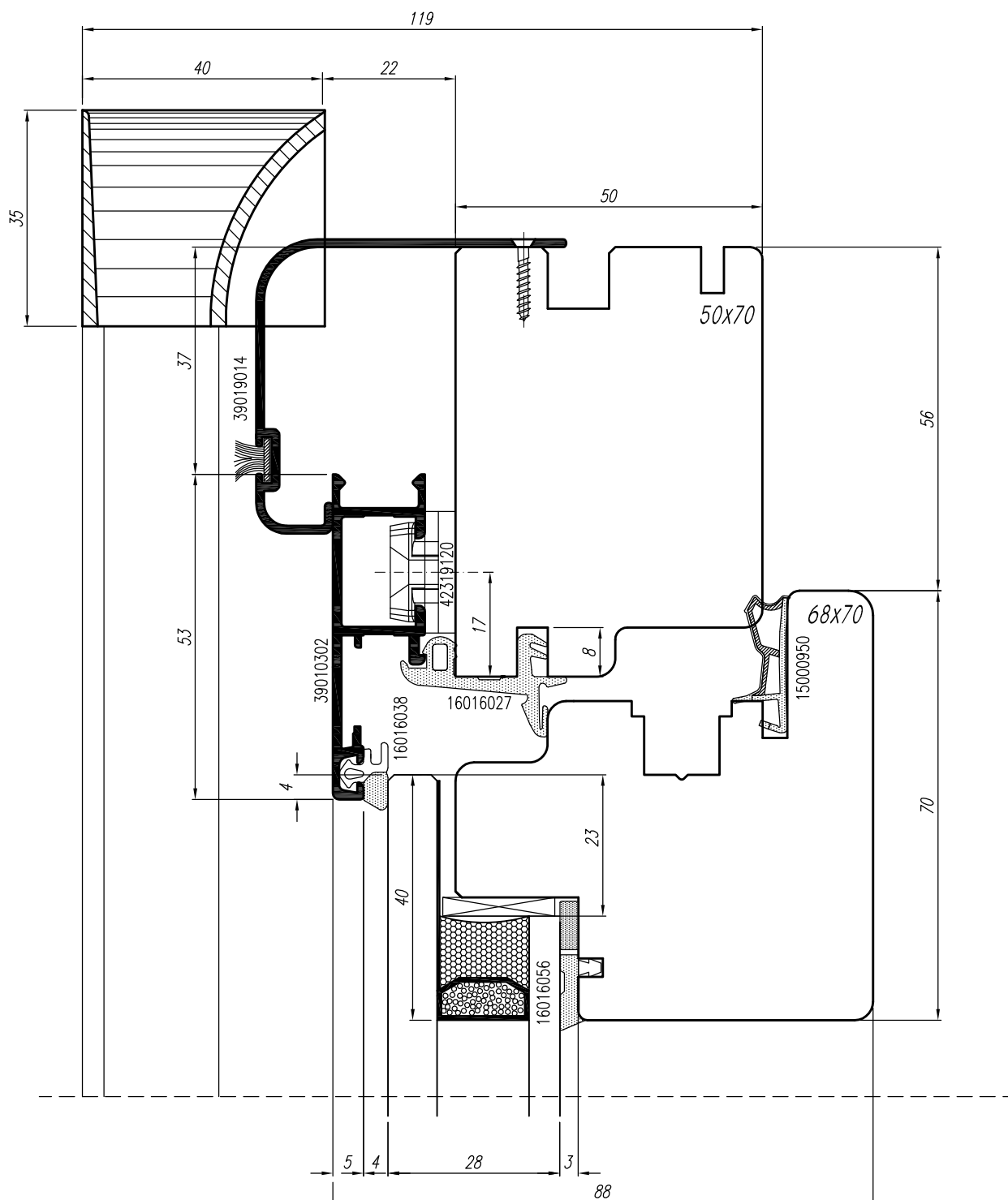
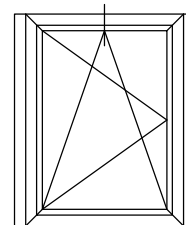


astro 11



ESCALA 1:1

- (E) *Seccion vertical y horizontal*
- (F) *Section verticale et horizontale*
- (I) *Sezione verticale e orizzontale*

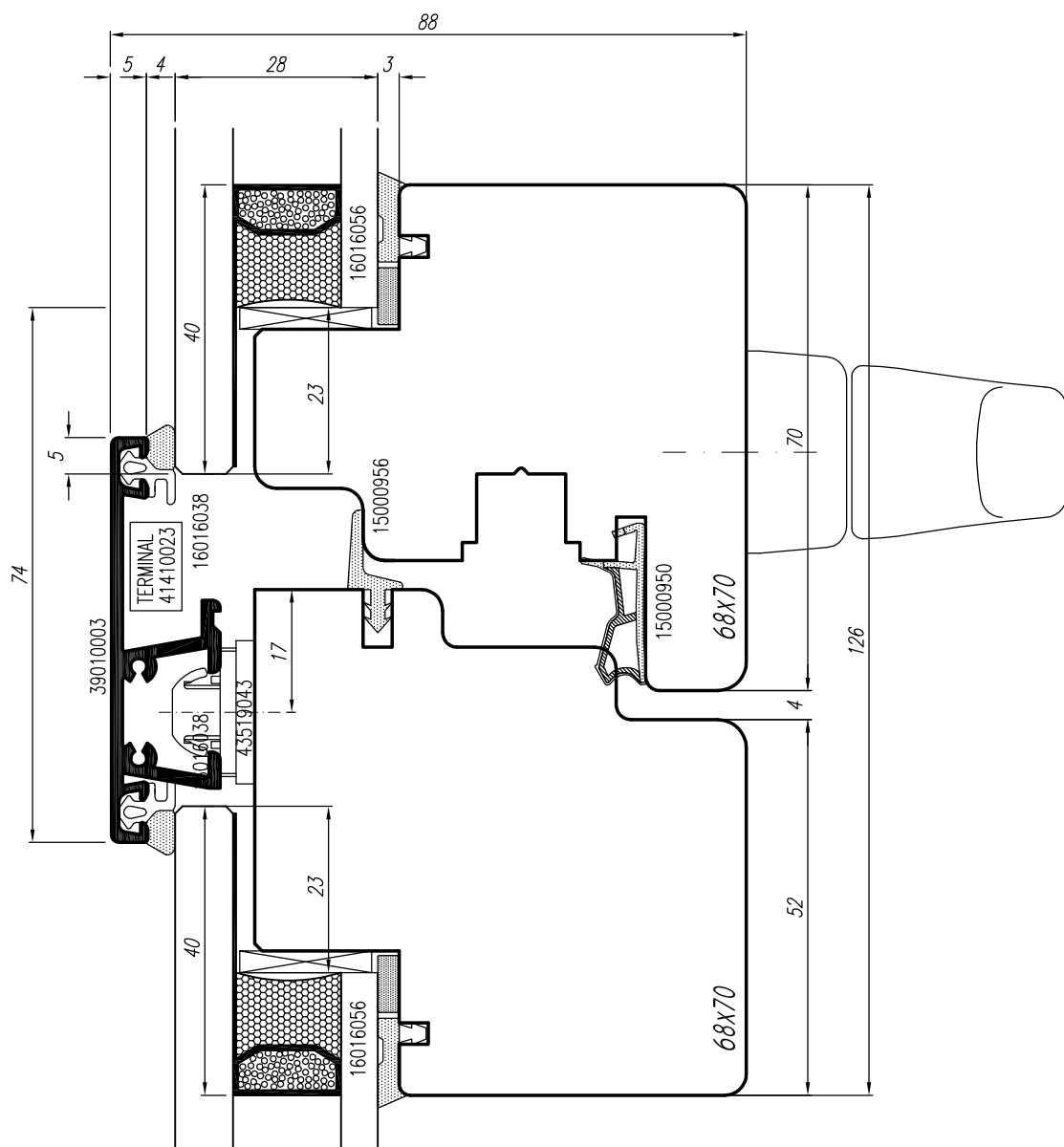
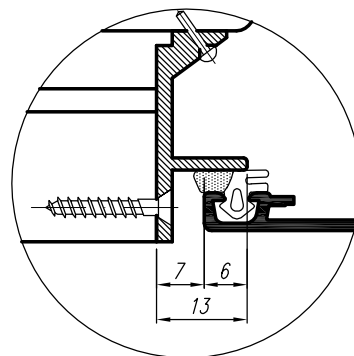
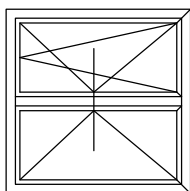


astro 11



ESCALA 1:1

- (E) *Seccion vertical travesaño superior*
- (F) *Section verticale traverse superieure*
- (I) *Sezione verticale traverso superiore*

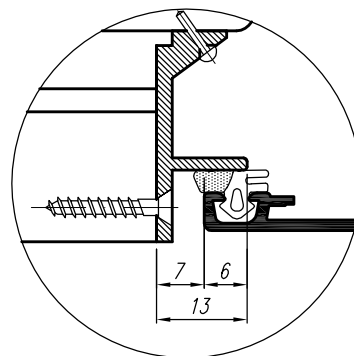


astro 11

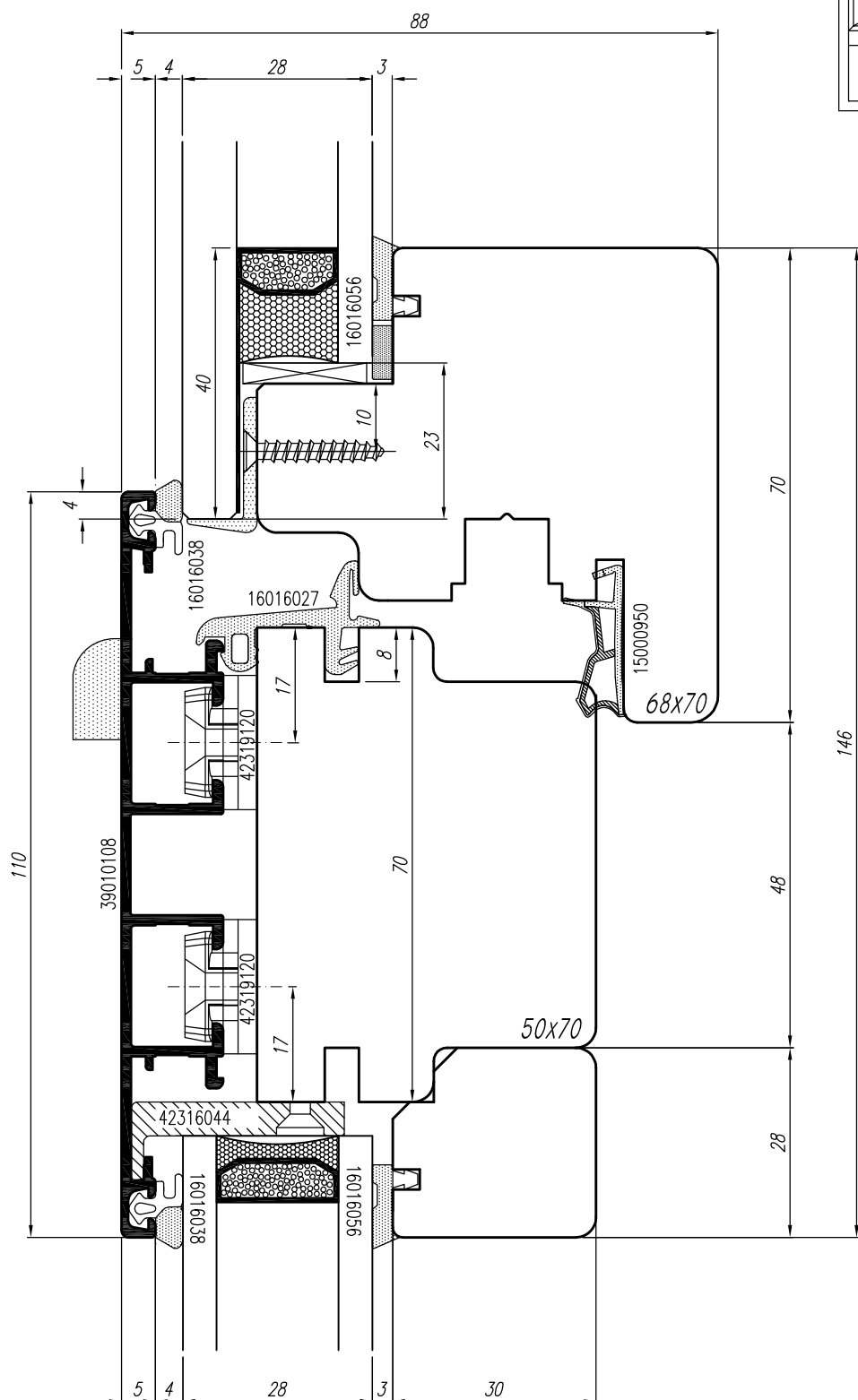
SINATEC

ESCALA 1:1

- (E) Sección horizontal cierre central
- (F) Section horizontale montant centrale
- (I) Sezione orizzontale snodo centrale



☐ E *Seccion horizontal cierre central*
☐ F *Section horizontale montant centrale*
☐ I *Sezione orizzontale snodo centrale*

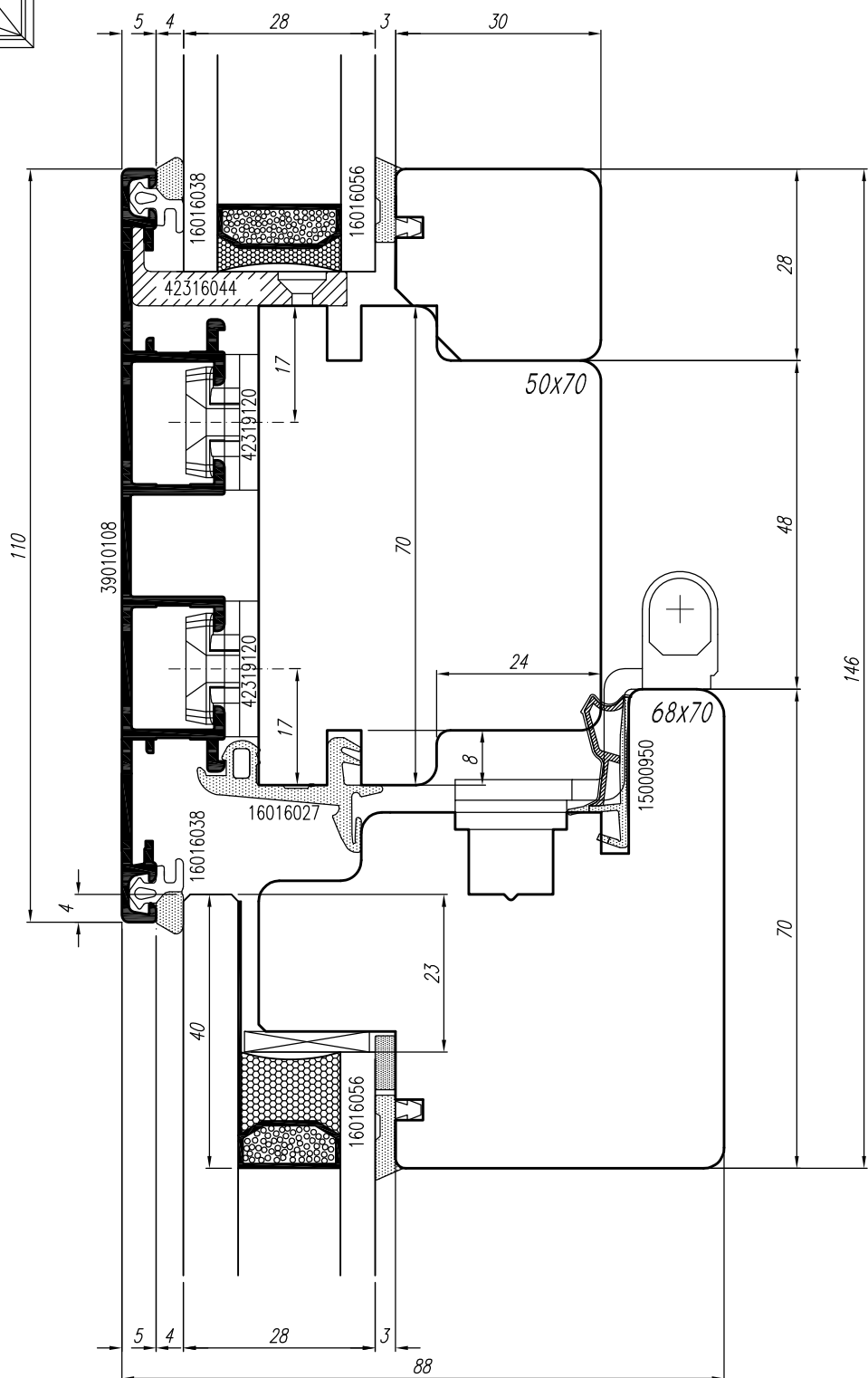
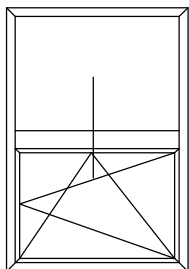


astro 11

SINATEC

ESCALA 1:1

- (E) *Seccion vertical travesaño practicable-fijo*
- (F) *Section verticale traverse ouvrant-fixe*
- (I) *Sezione verticale traverso apribile-fisso*

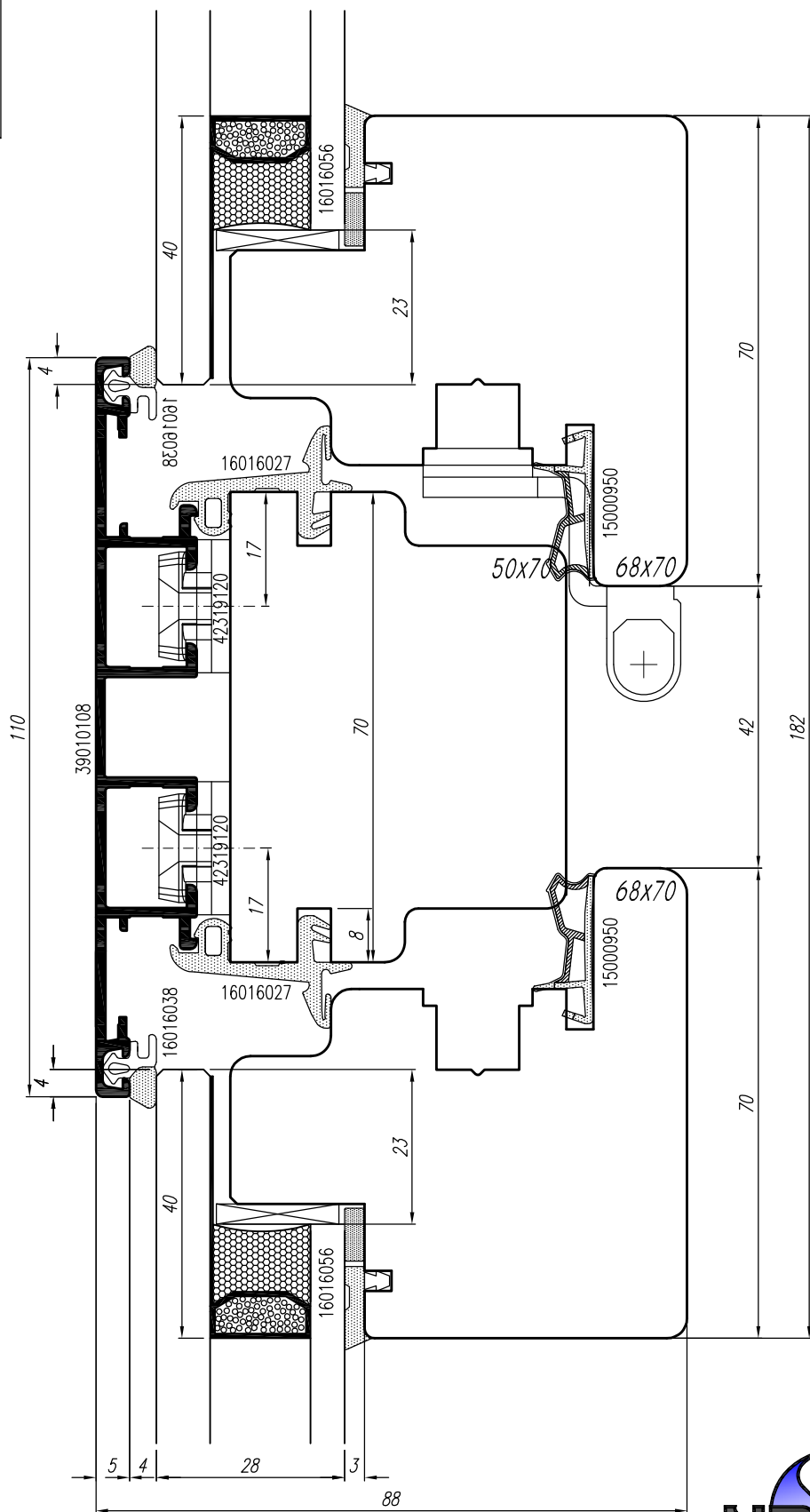
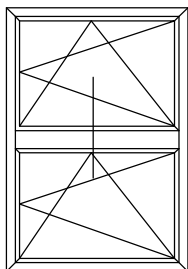


astro 11



ESCALA 1:1

- (E) Sección horizontal montante practicable-fijo
- (F) Section horizontale montant ouvrant-fixe
- (I) Sezione orizzontale montante apribile-fisso

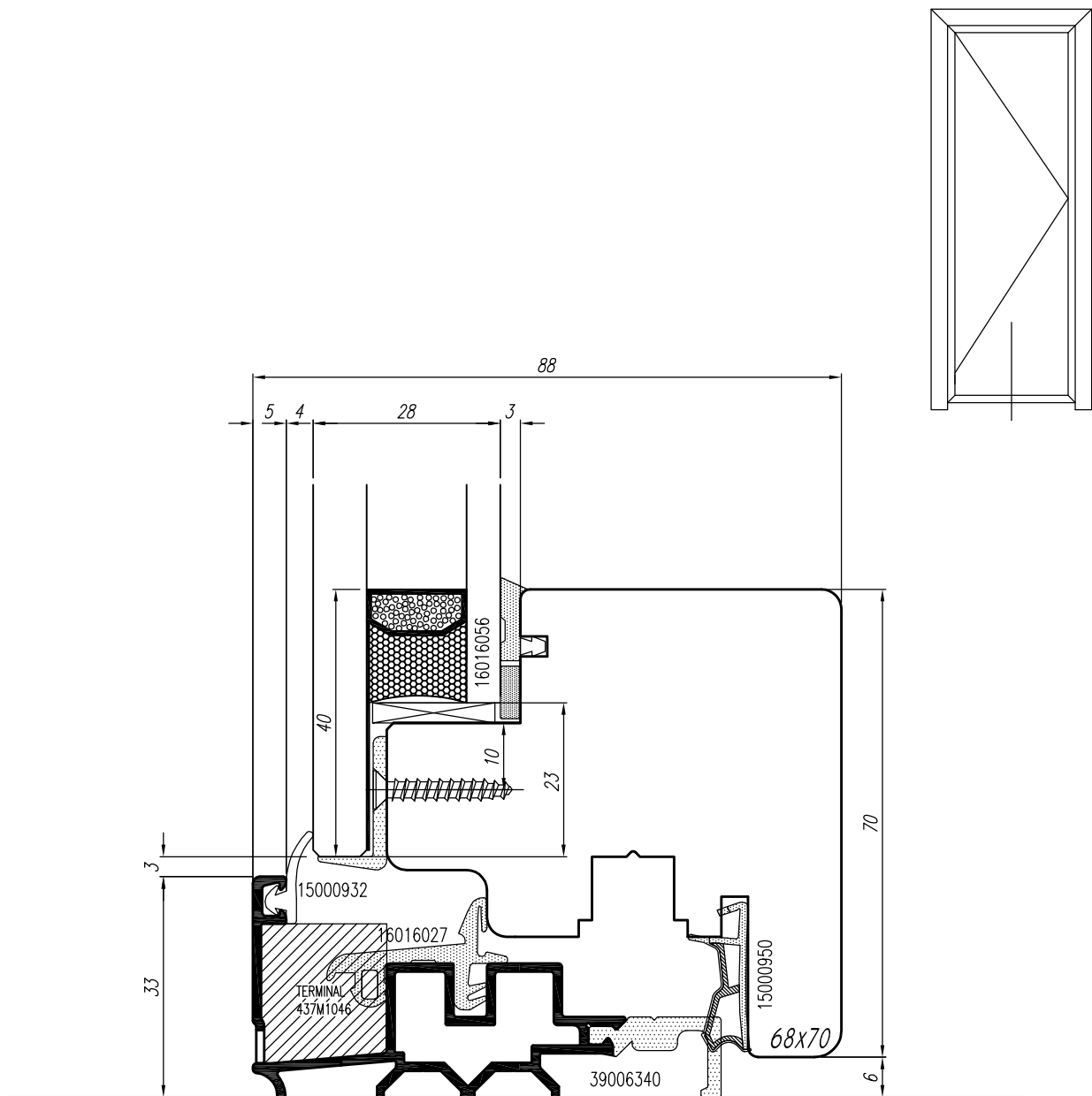


astro 11



ESCALA 1:1

- (E) Seccion horizontal montante practicable-practicable
- (F) Section horizontale montant ouvrant-ouvrant
- (I) Sezione orizzontale montante apribile-apribile



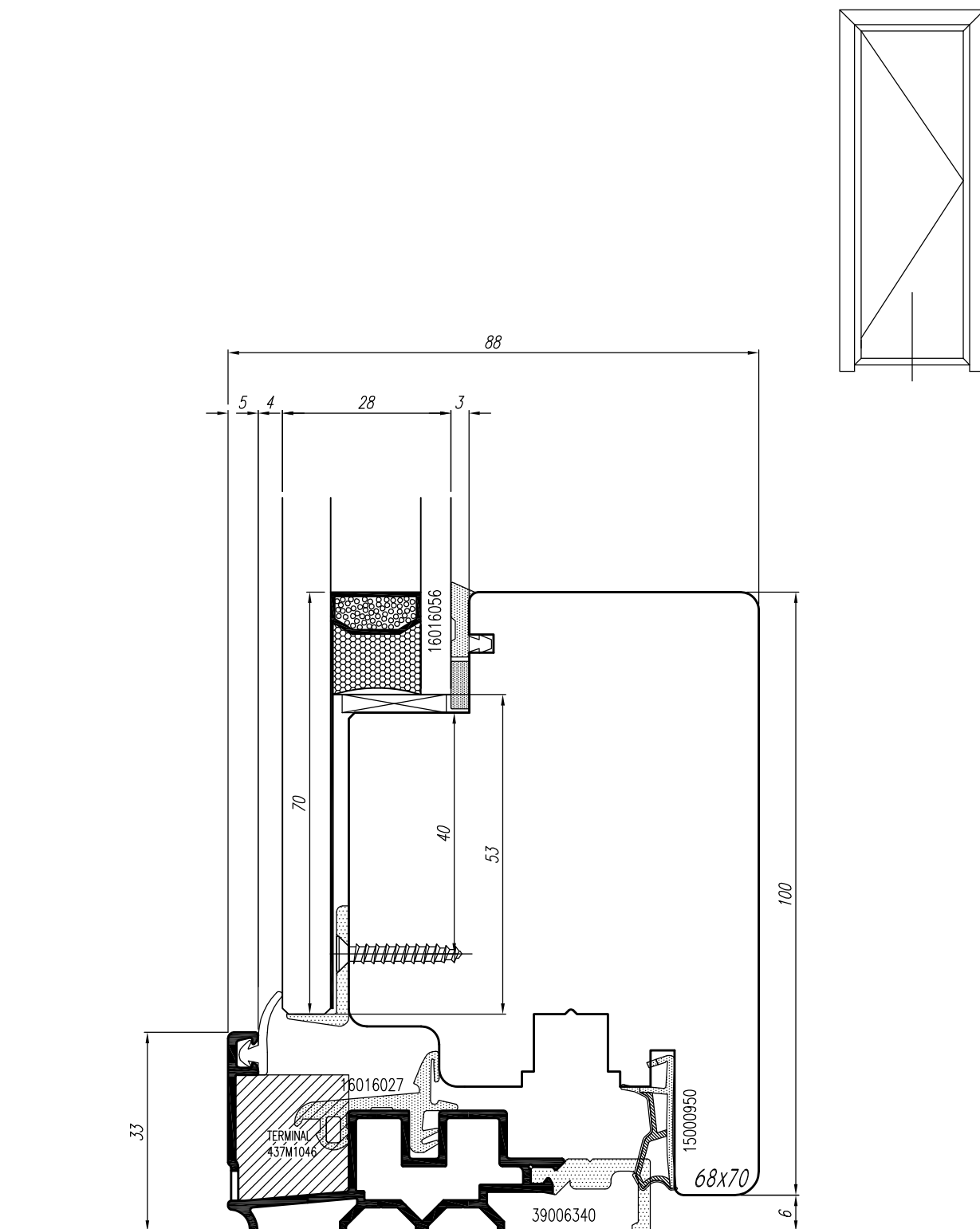
astro 11

ESCALA 1:1

SINATEC

53

- (E) Sección vertical travesaño inferior con umbral
- (F) Sec. verticale traverse inferieure avec sur seuil
- (I) Sezione verticale traverso inferiore con soglia

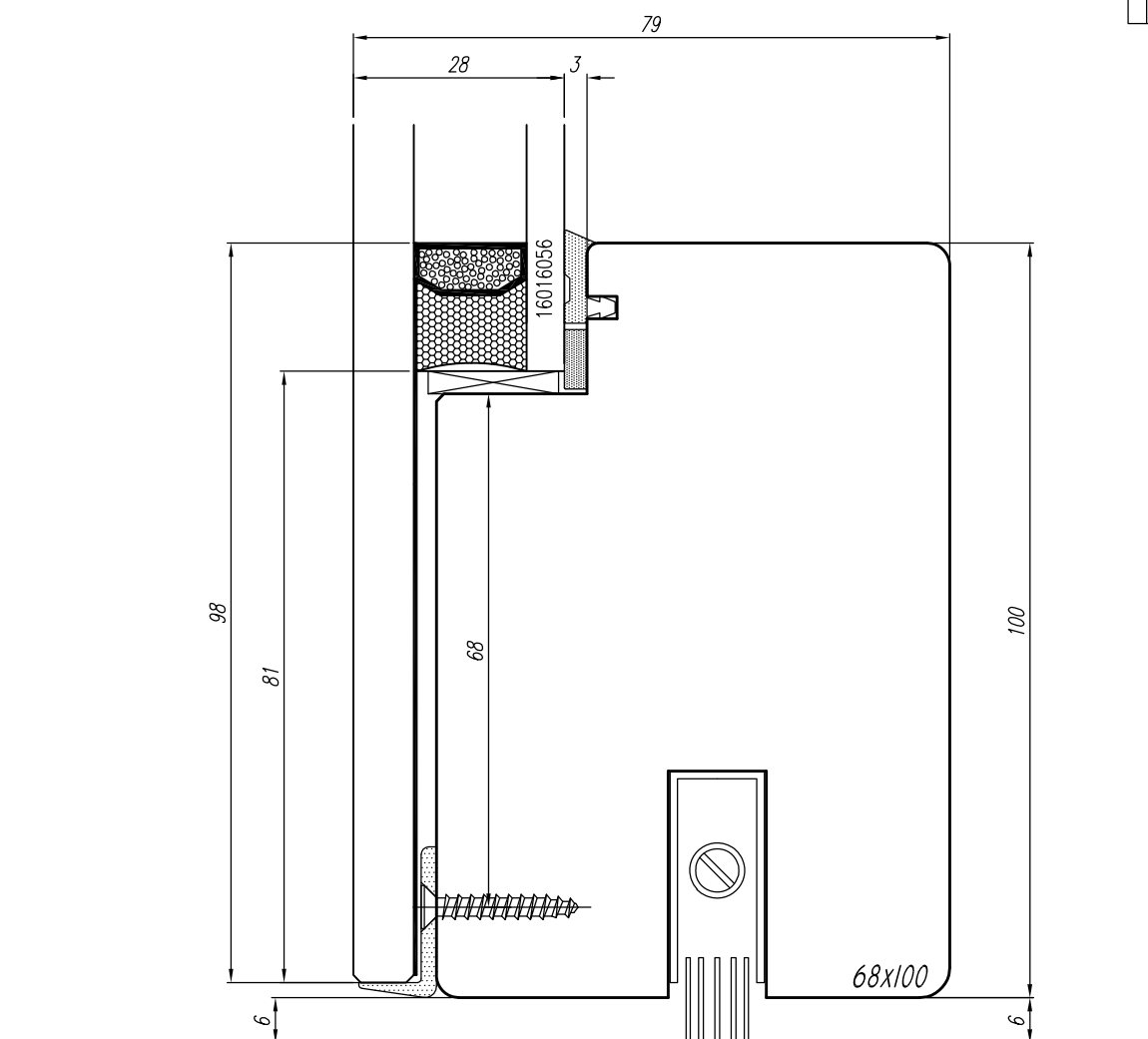


astro 11

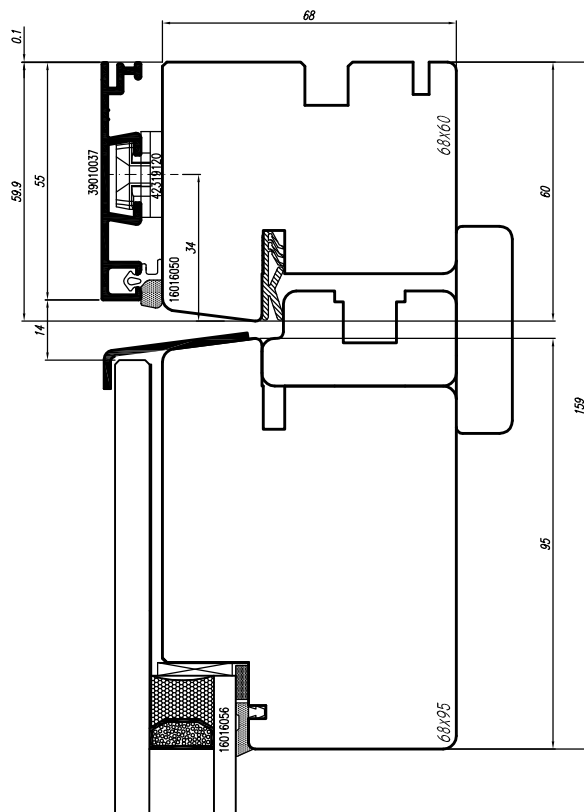
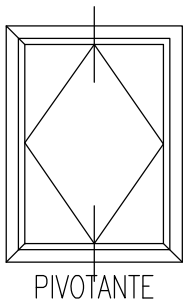
SINATEC

ESCALA 1:1

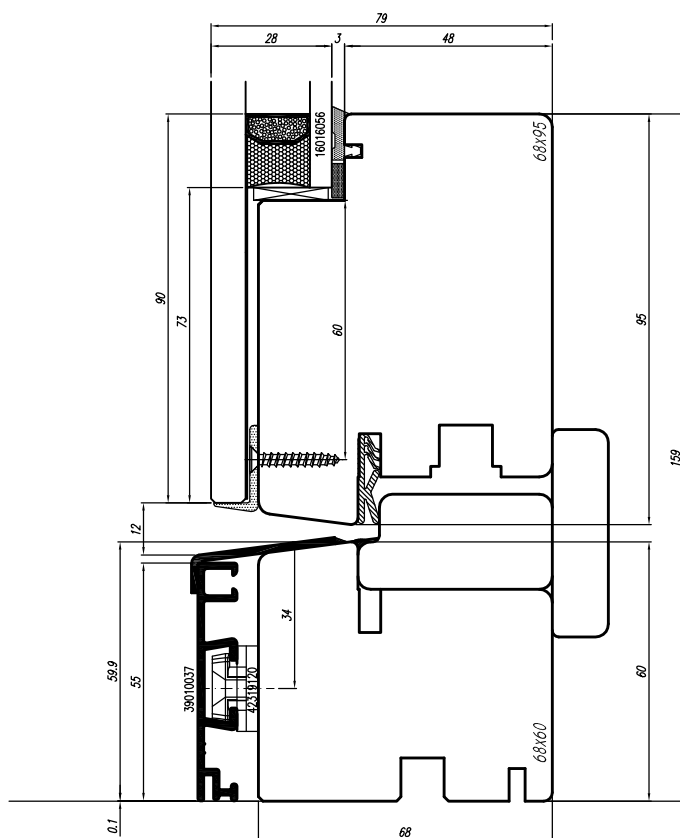
- (E) Sección vertical travesaño inferior con umbral
- (F) Sec. verticale traverse inferieure avec sur seuil
- (I) Sezione verticale traverso inferiore con soglia



☐ E *Seccion vertical travesaño inferior con cortavientos*
☐ F *Sec. verticale traverse inferieure avec plaintes automatiques*
☐ I *Sezione verticale traverso inferiore con parafreddo*



pivotante seccion por encima del centro

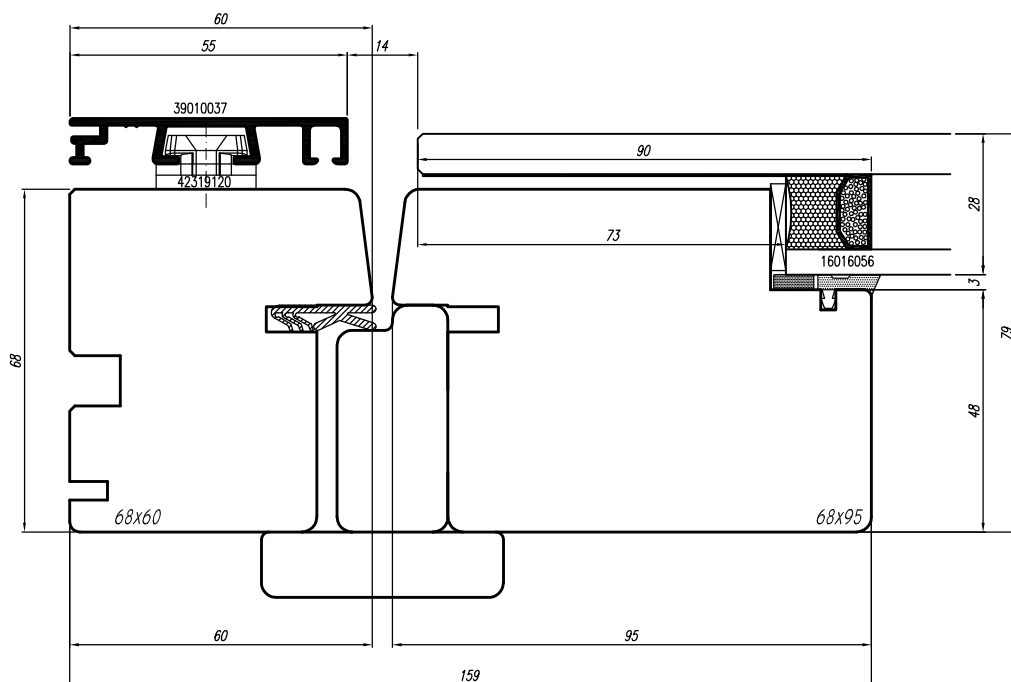
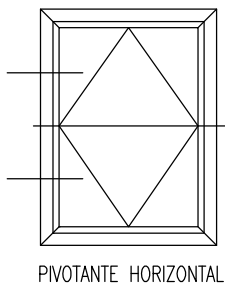


pivotante seccion por debajo del centro

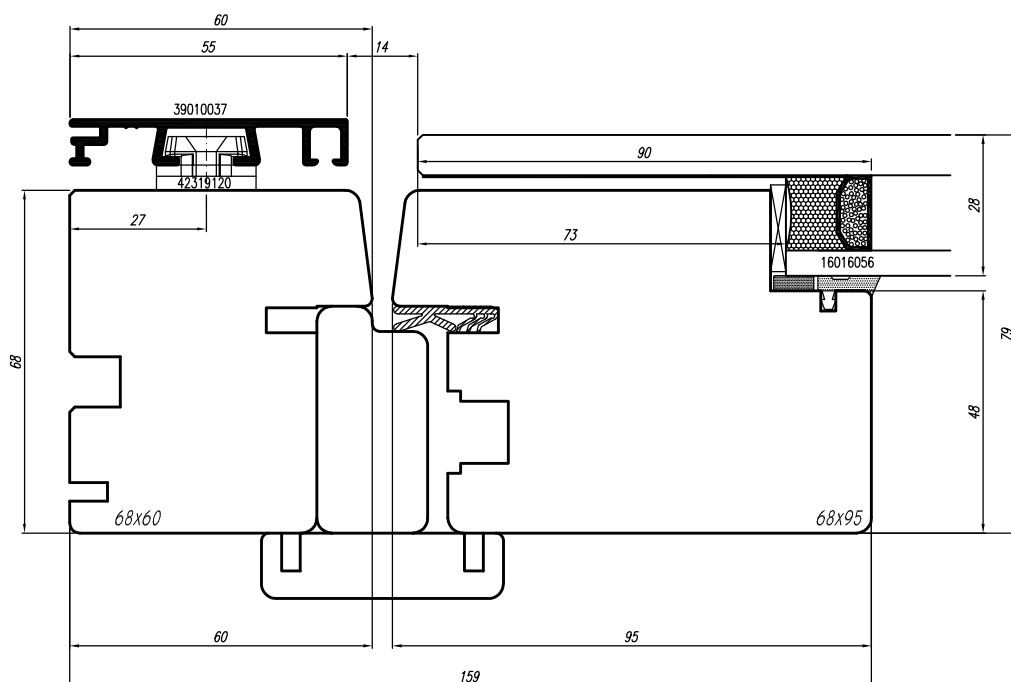
astro 11

ESCALA 1:1,75

- (E) Seccion vertical travesaño pivotante
- (F) Section verticale traverse pivotant
- (I) Sezione verticale traverso bilico



pivotante seccion por encima del centro



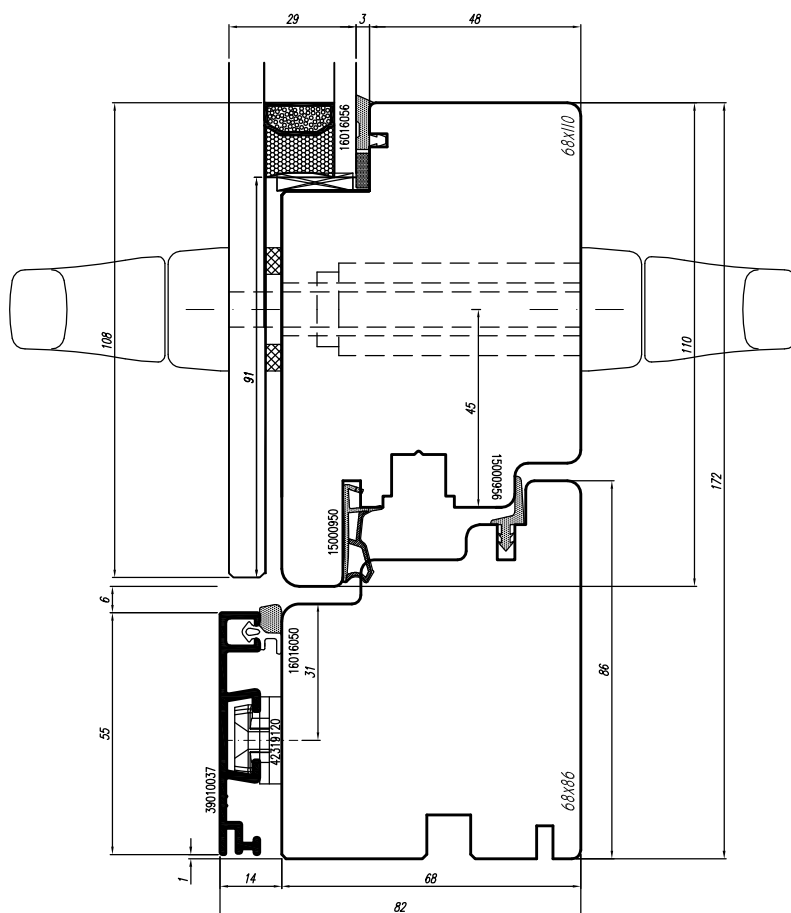
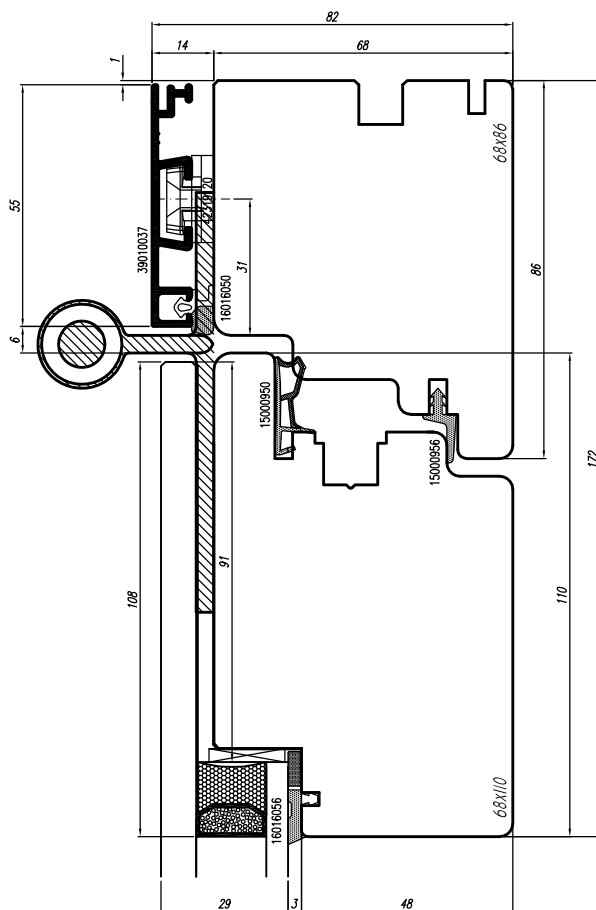
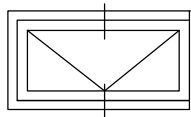
pivotante seccion por debajo del centro

astro 11



ESCALA 1:1,5

- (E) Seccion horizontal montante pivotante horizontal sobre la bisagra
- (F) Section horizontale montant pivotant horizontale sur charnière
- (I) Sezione orizzontale montante bilico orizzontale parte superiore

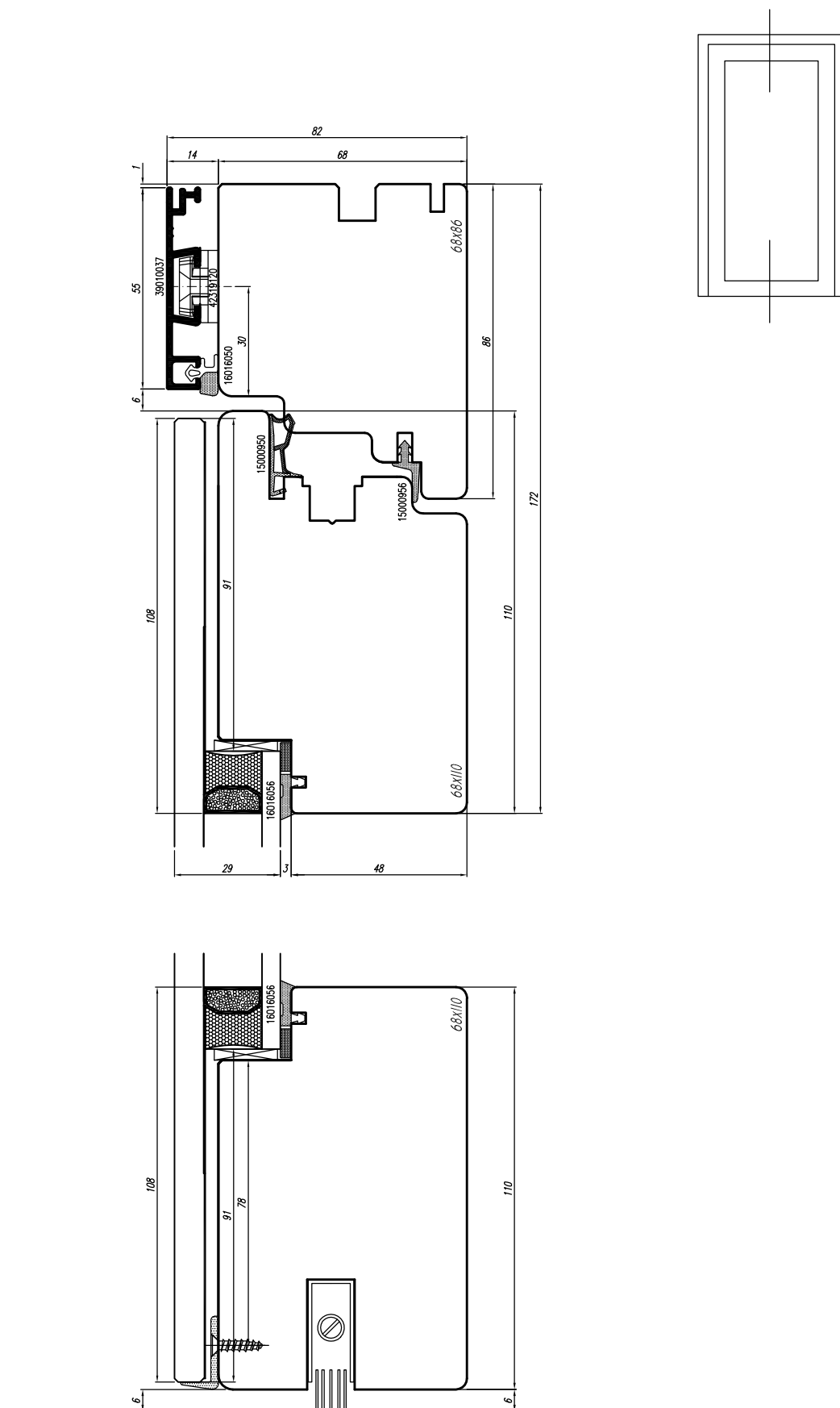


astro 11

ESCALA 1:1,72



- (E) *Seccion horizontal cerramiento antipánico*
- (F) *Section horizontale porte ouverture exterieure*
- (I) *Sezione orizzontale infisso antipánico*

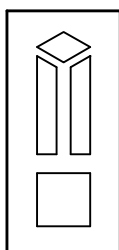


astro 11

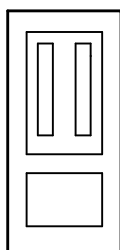
ESCALA 1:1,66

SINATEC

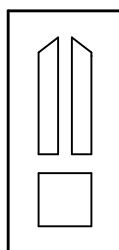
- (E) *Seccion vertical cerramiento antipánico*
- (F) *Section verticale porte ouverture exterieure*
- (I) *Sezione verticale infisso antipánico*



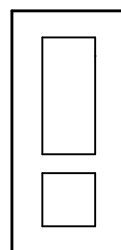
mod.100



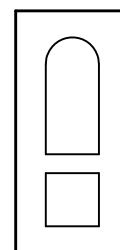
mod.102



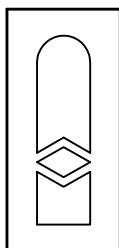
mod.103



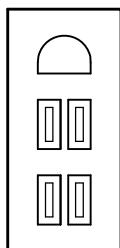
mod.104



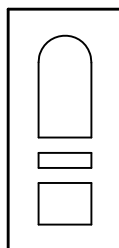
mod.105



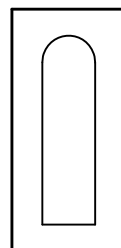
mod.109



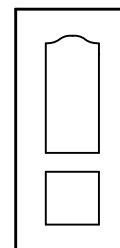
mod.111



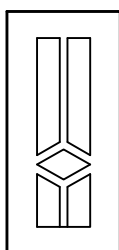
mod.112



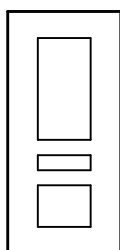
mod.113



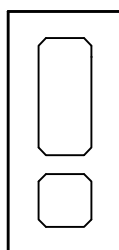
mod.114



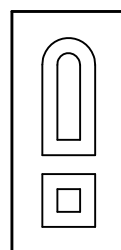
mod.115



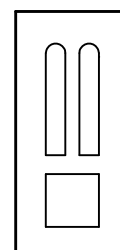
mod.116



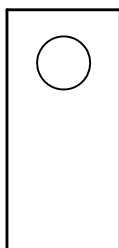
mod.117



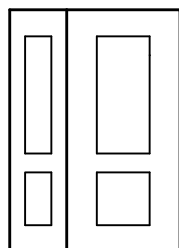
mod.121



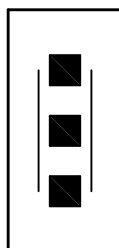
mod.122



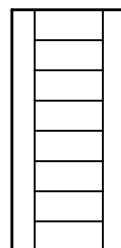
mod.93



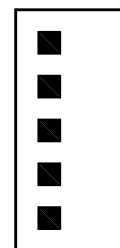
Ejemplo+fijo



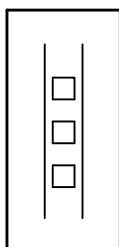
mod.405



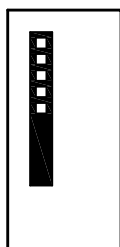
mod.406



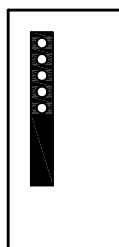
mod.407



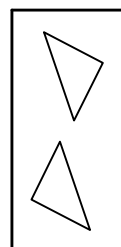
mod.700



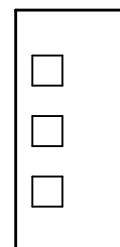
mod.701



mod.702



mod.703



mod.704

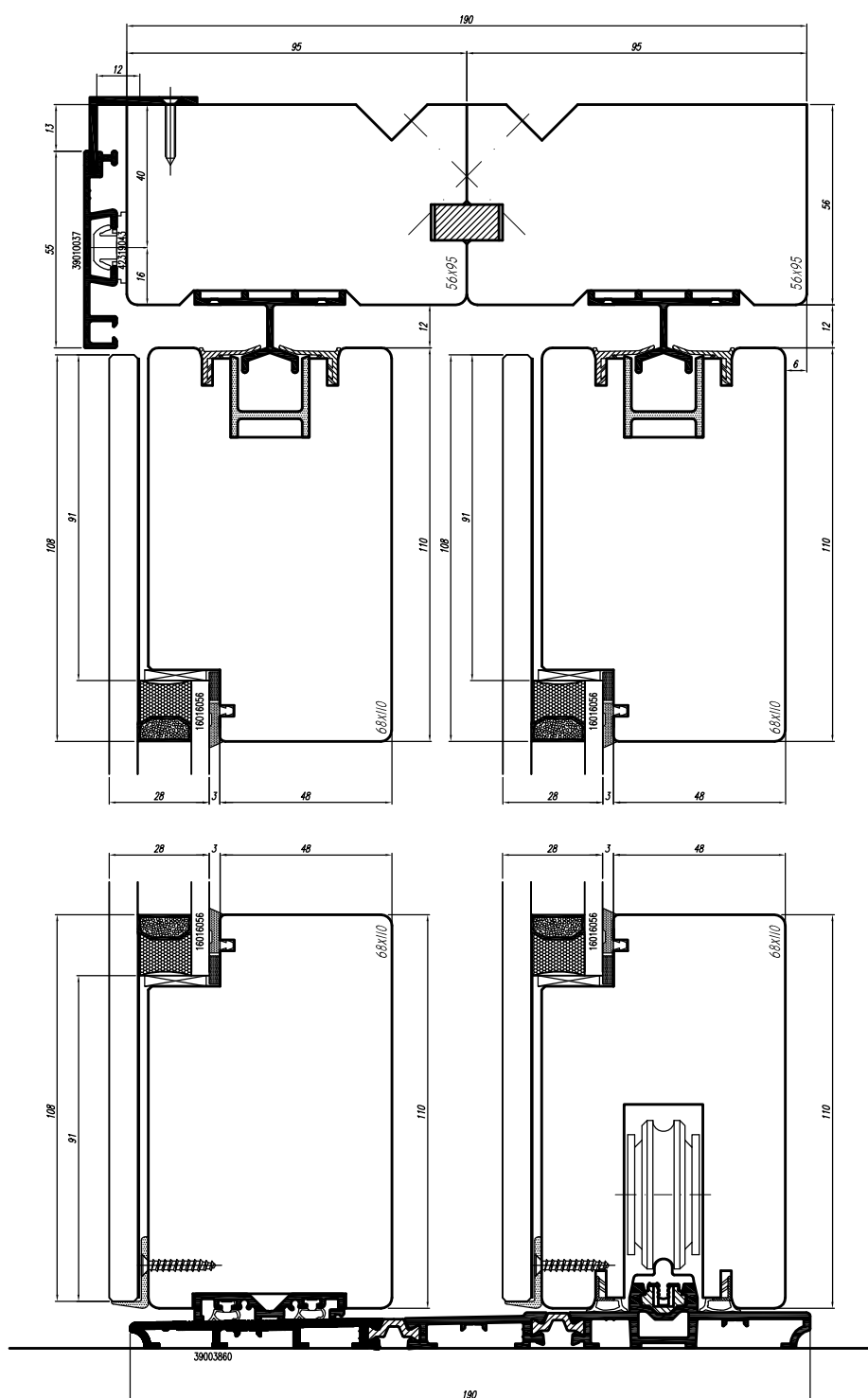
astro 11

SINATEC

ESCALA

- (E) *Paneles decorativos*
- (F) *Panneaux decoratifs*
- (I) *Pannelli bugnati*

lado interior



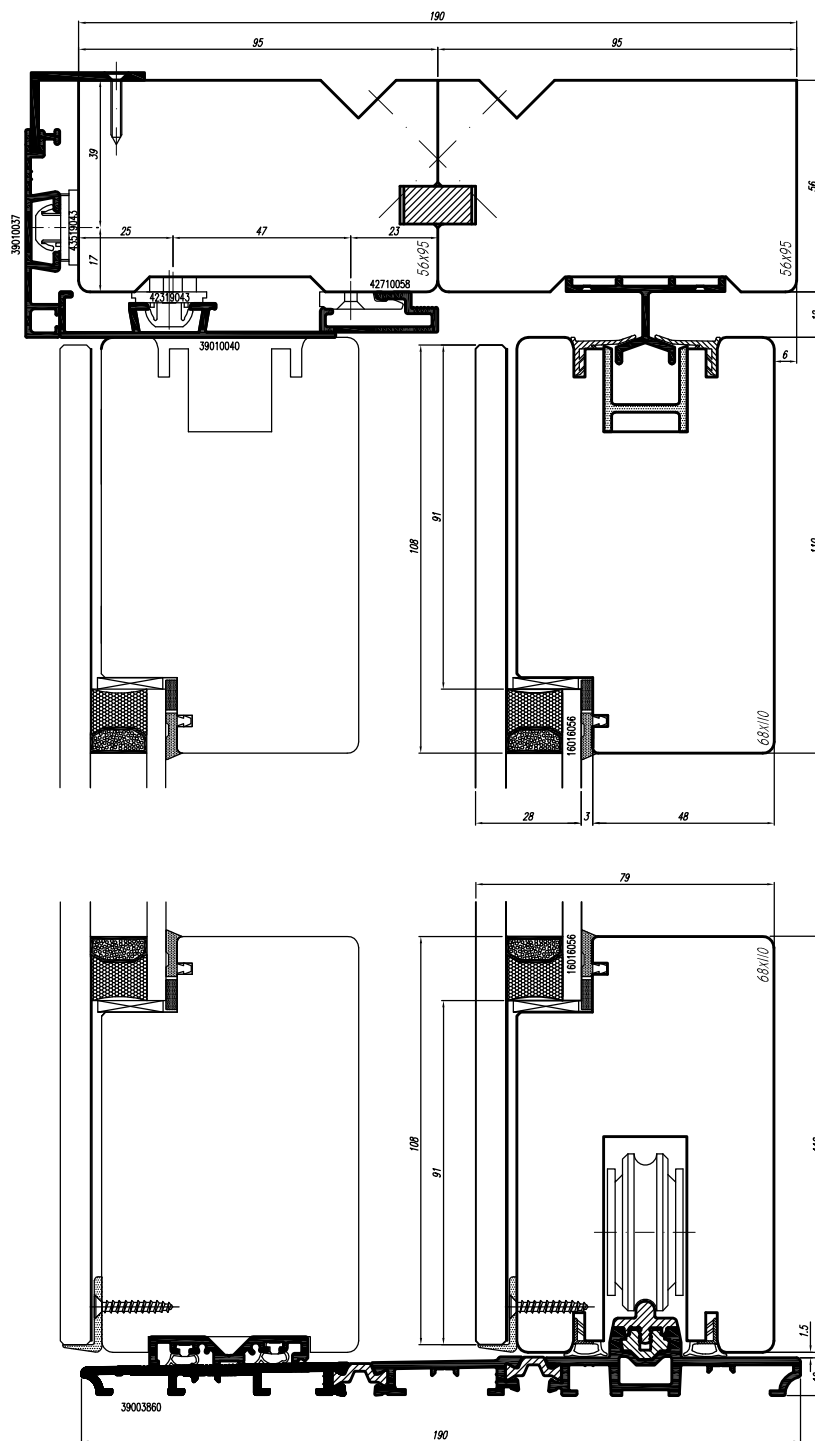
astro 11



ESCALA 1:2

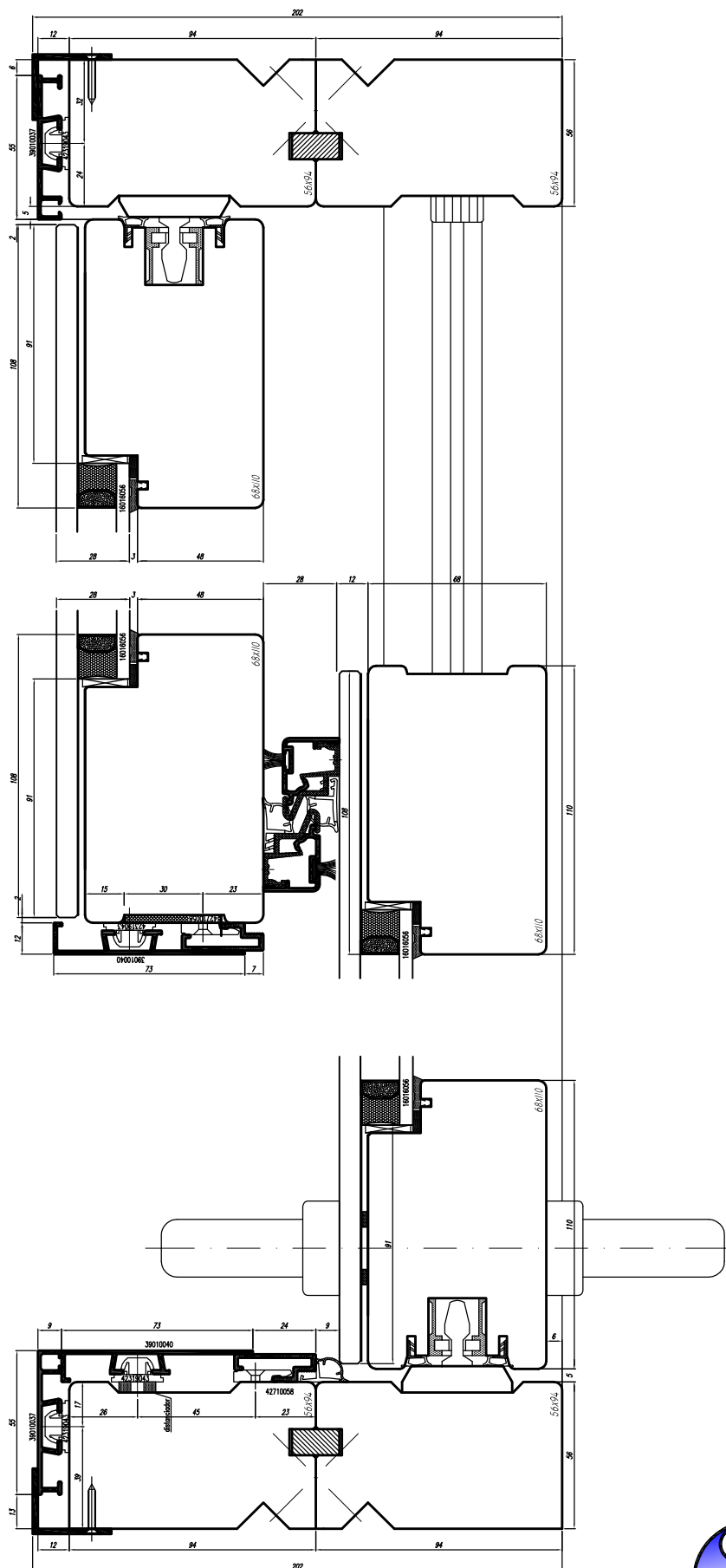
- ☐ *Seccion vertical corredera elevadora hoja abrible-fijo*
☐ *Section verticale baie coulissante mobile-fixe*
☐ *Sezione verticale alzante scorrevole anta apribile-fisso*

lado interior

**astro 11**

ESCALA 1:2

- ☐ *Seccion vertical corredera elevadora hoja abrile-fijo*
☐ *Section verticale baie coulissante mobile-fixe*
☐ *Sezione verticale alzante scorrevole anta apribile-fisso*

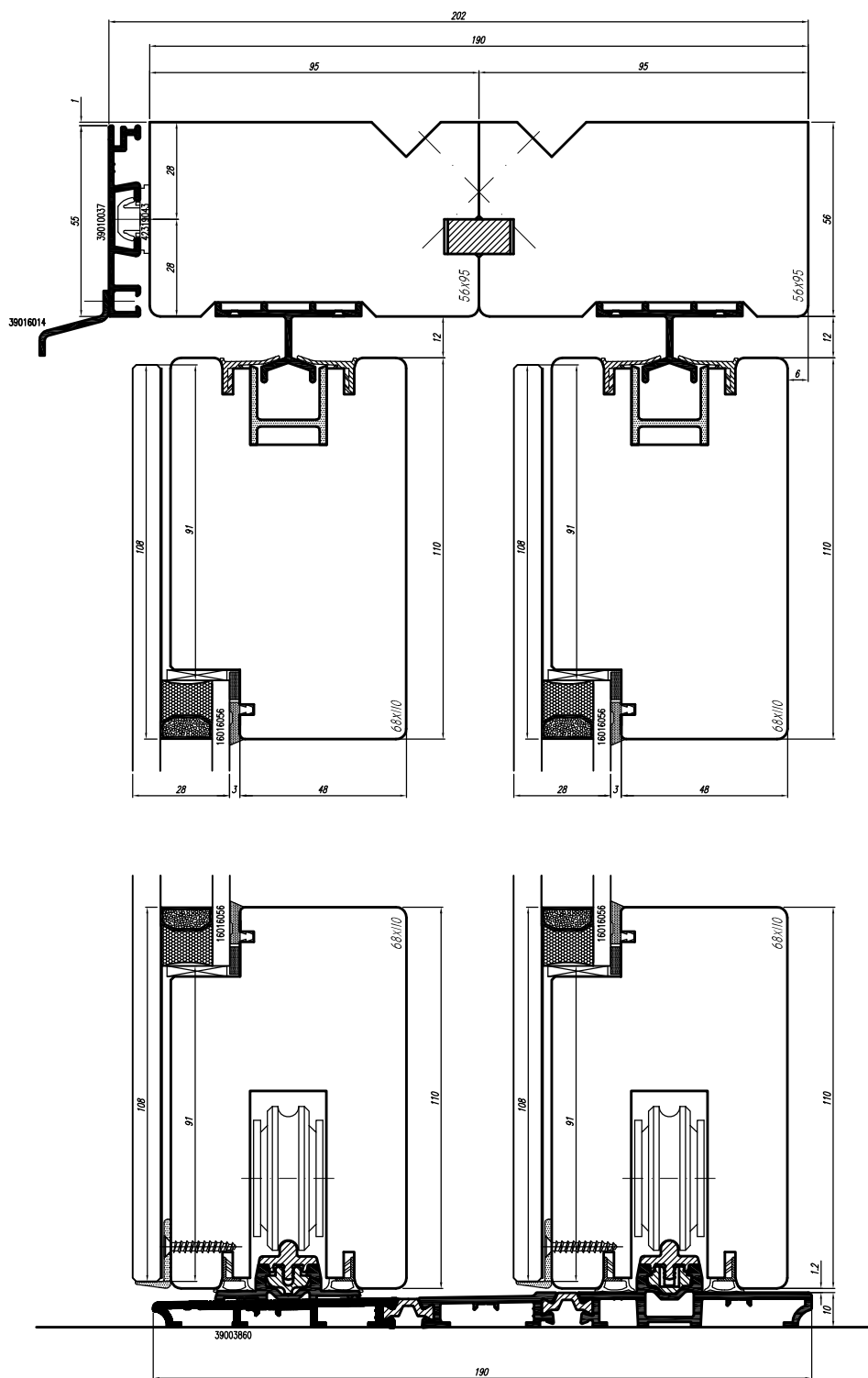


astro 11



ESCALA 1:2,5

- (E) *Seccion horizontal corredera elevadora hoja abrible-fijo*
- (F) *Section horizontale baie coulissante mobile-fixe*
- (I) *Sezione orizzontale alzante scorrevole anta apribile-fisso*

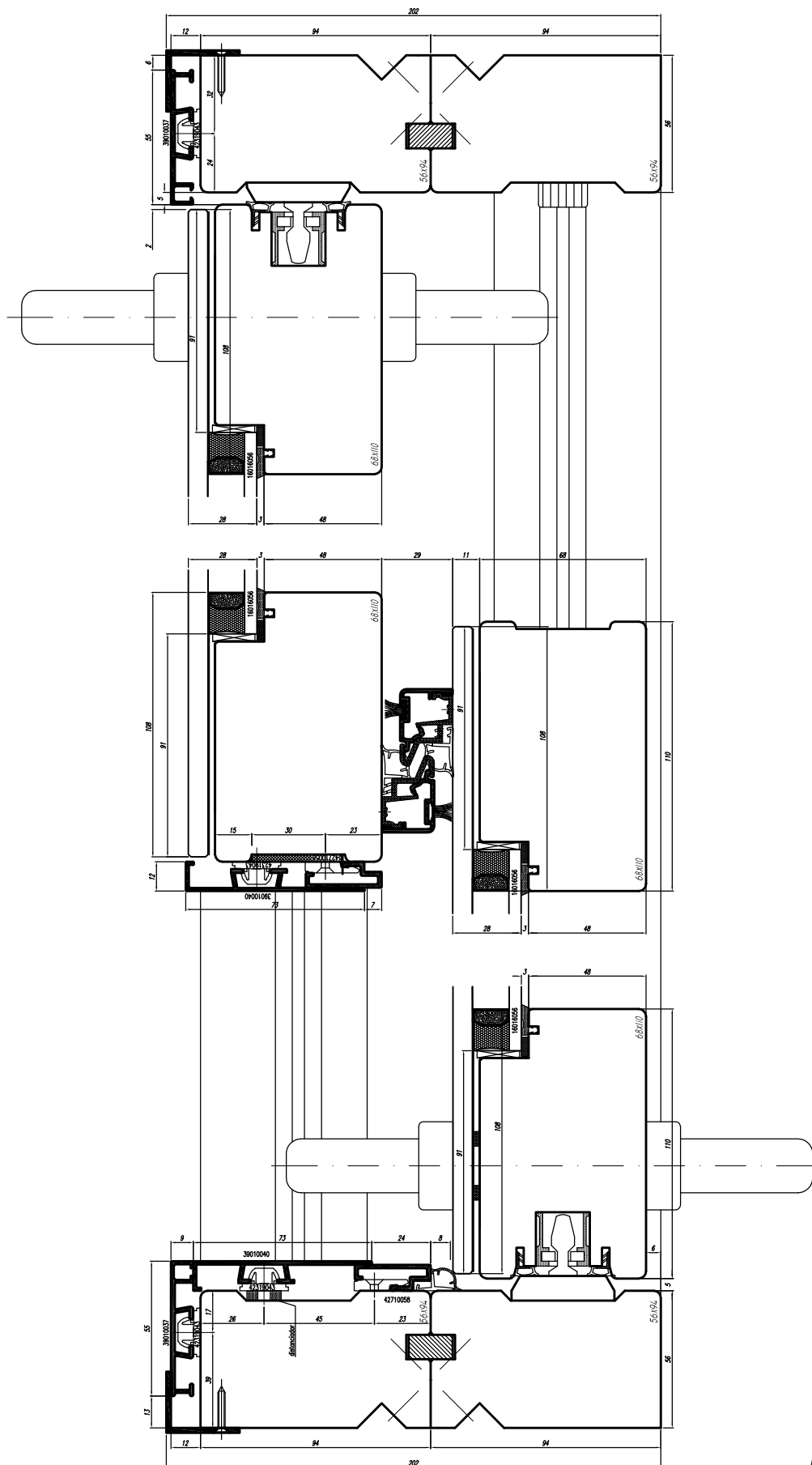


astro 11

SINATEC

ESCALA 1:2

- (E) Sección vertical corredera elevadora hoja abrible-abrible
- (F) Section verticale baie coulissante mobile-mobile
- (I) Sezione verticale alzante scorrevole anta apribile-apribile

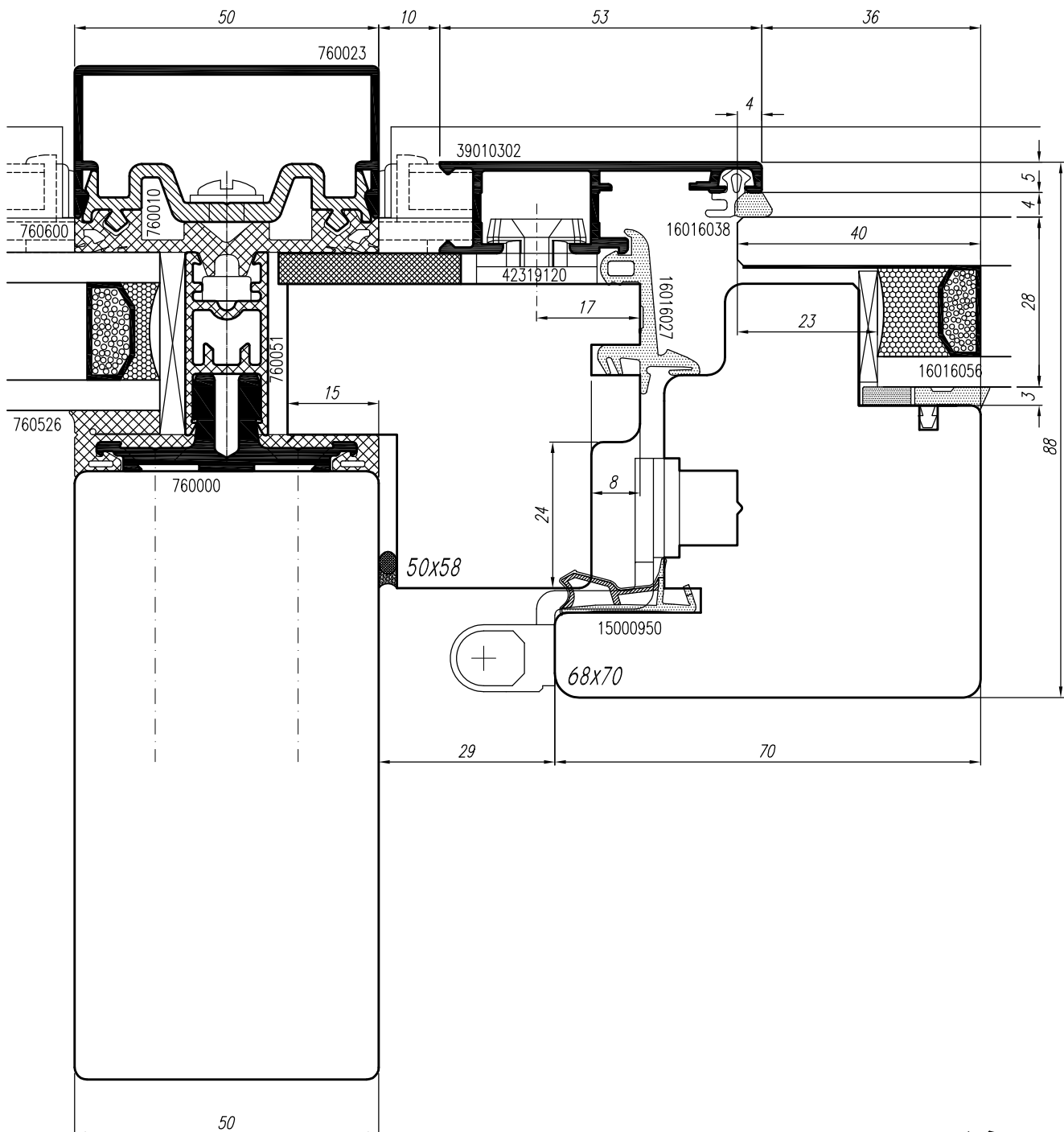
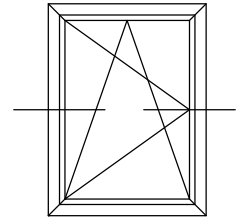


astro 11



ESCALA 1:2,5

- (E) Sección horizt. corredera elevadora hoja abrible-abrible
- (F) Section horizontale baie coulissante mobile-mobile
- (I) Sezione verticale alzante scorrevole anta apribile-apribile

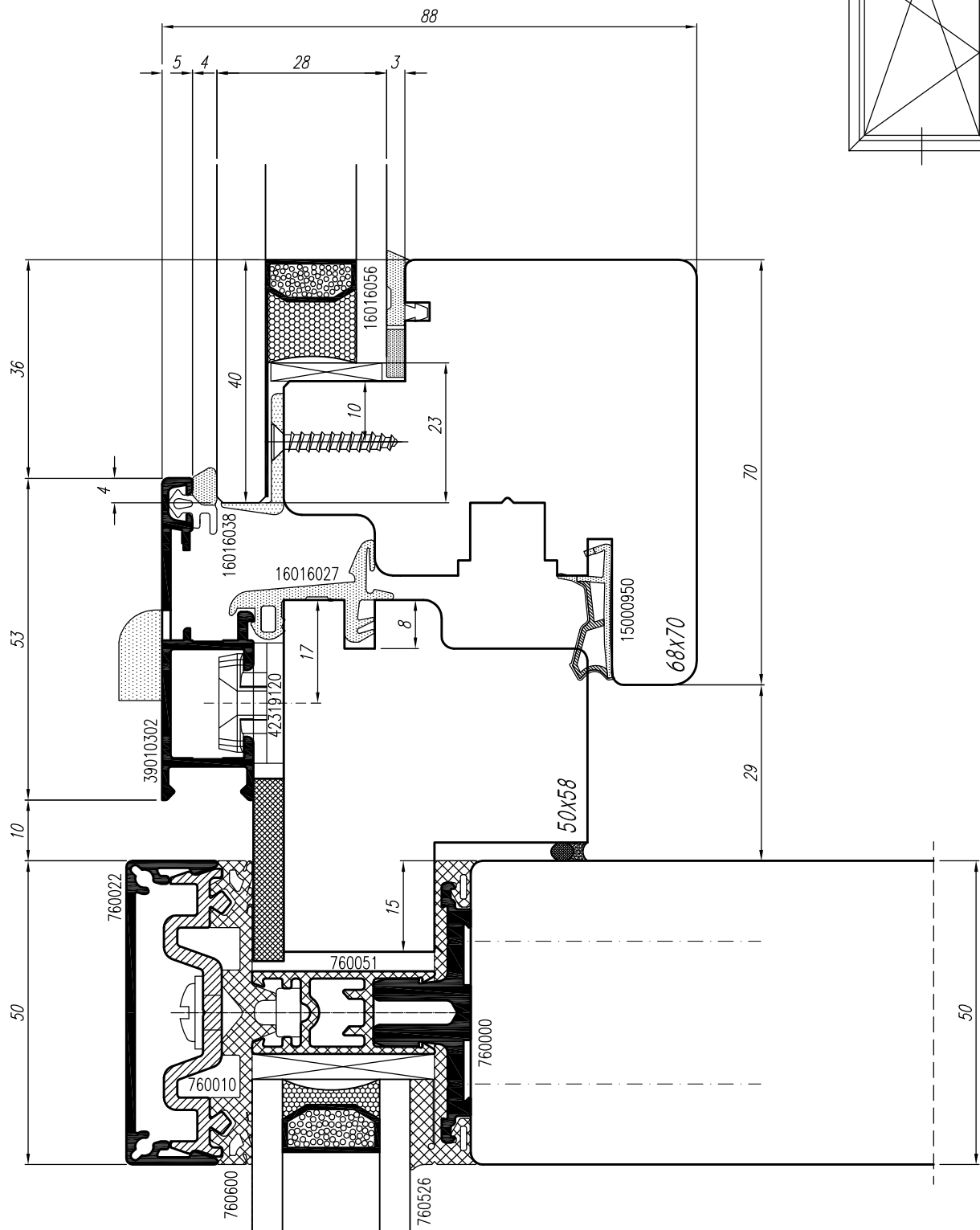


astro 11



ESCALA 1:1

- (E) *Seccion horizontal muro cortina*
- (F) *Section horizontale curtain wall*
- (I) *Sezione orizzontale facciata continua*



astro 11

SINATEC

ESCALA 1:1

- (E) Sección vertical muro cortina
- (F) Section verticale curtain wall
- (I) Sezione verticale facciata continua